

Product datasheet for **TA338038**

RFK Rabbit Polyclonal Antibody

Product data:

Product Type:	Primary Antibodies
Applications:	WB
Recommended Dilution:	WB
Reactivity:	Human
Host:	Rabbit
Isotype:	IgG
Clonality:	Polyclonal
Immunogen:	The immunogen for anti-RFK antibody is: synthetic peptide directed towards the N-terminal region of Human RFK. Synthetic peptide located within the following region: YGWASVGSVDVHKMVSIGWNPYYKNTKKSMETHIMHTFKEDFYGEILNV
Formulation:	Liquid. Purified antibody supplied in 1x PBS buffer with 0.09% (w/v) sodium azide and 2% sucrose. <i>Note that this product is shipped as lyophilized powder to China customers.</i>
Purification:	Affinity Purified
Conjugation:	Unconjugated
Storage:	Store at -20°C as received.
Stability:	Stable for 12 months from date of receipt.
Predicted Protein Size:	17 kDa
Gene Name:	riboflavin kinase
Database Link:	NP_060809 Entrez Gene 55312 Human Q969G6
Background:	Riboflavin kinase is an essential enzyme that catalyzes the phosphorylation of riboflavin (vitamin B2) to form flavin mononucleotide (FMN), an obligatory step in vitamin B2 utilization and flavin cofactor synthesis.
Synonyms:	RIFK
Note:	Immunogen Sequence Homology: Dog: 100%; Pig: 100%; Horse: 100%; Human: 100%; Yeast: 100%; Bovine: 100%; Zebrafish: 100%; Rat: 93%; Mouse: 93%; Rabbit: 93%; Guinea pig: 93%

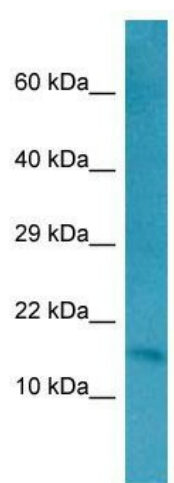


[View online »](#)

Protein Families: Druggable Genome

Protein Pathways: Metabolic pathways, Riboflavin metabolism

Product images:



WB Suggested Anti-RFK Antibody; Titration: 1.0 ug/ml; Positive Control: HepG2 Whole Cell