

## Product datasheet for **TA338037**

### **EHM2 (EPB41L4B) Rabbit Polyclonal Antibody**

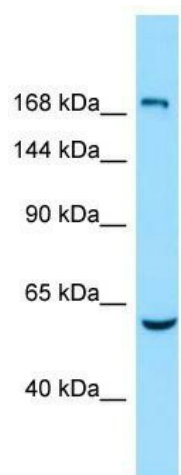
#### **Product data:**

<b>Product Type:</b>	Primary Antibodies
<b>Applications:</b>	WB
<b>Recommended Dilution:</b>	WB
<b>Reactivity:</b>	Human
<b>Host:</b>	Rabbit
<b>Isotype:</b>	IgG
<b>Clonality:</b>	Polyclonal
<b>Immunogen:</b>	The immunogen for anti-EPB41L4B antibody is: synthetic peptide directed towards the middle region of Human EPB41L4B. Synthetic peptide located within the following region: AELGECELPEHTPELVSEFRFIPNQTEAMEFDIFQRWKECRGKSPAQAEI
<b>Formulation:</b>	Liquid. Purified antibody supplied in 1x PBS buffer with 0.09% (w/v) sodium azide and 2% sucrose. <i>Note that this product is shipped as lyophilized powder to China customers.</i>
<b>Purification:</b>	Affinity Purified
<b>Conjugation:</b>	Unconjugated
<b>Storage:</b>	Store at -20°C as received.
<b>Stability:</b>	Stable for 12 months from date of receipt.
<b>Predicted Protein Size:</b>	55 kDa
<b>Gene Name:</b>	erythrocyte membrane protein band 4.1 like 4B
<b>Database Link:</b>	<a href="#">NP_060894</a> <a href="#">Entrez Gene 54566 Human</a> <a href="#">Q9H329</a>
<b>Background:</b>	The function of this protein remains unknown.
<b>Synonyms:</b>	CG1; EHM2
<b>Note:</b>	Immunogen Sequence Homology: Dog: 100%; Pig: 100%; Horse: 100%; Human: 100%; Bovine: 100%; Rabbit: 100%; Guinea pig: 100%; Rat: 93%; Mouse: 93%; Zebrafish: 85%



[View online »](#)

## Product images:



WB Suggested Anti-EPB41L4B Antibody; Titration:  
1.0 ug/ml; Positive Control: Fetal Lung