

## Product datasheet for **TA338036**

### ZNF302 Rabbit Polyclonal Antibody

#### Product data:

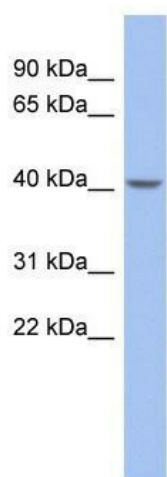
Product Type:	Primary Antibodies
Applications:	WB
Recommended Dilution:	WB
Reactivity:	Human
Host:	Rabbit
Isotype:	IgG
Clonality:	Polyclonal
Immunogen:	The immunogen for anti-ZNF302 antibody: synthetic peptide directed towards the middle region of human ZNF302. Synthetic peptide located within the following region: CMNCGKSF <del>SRV</del> SLLIQH <del>LRIHT</del> QEKRYECRICGKAFIHSSSLIHHQKSHT
Formulation:	Liquid. Purified antibody supplied in 1x PBS buffer with 0.09% (w/v) sodium azide and 2% sucrose. <i>Note that this product is shipped as lyophilized powder to China customers.</i>
Purification:	Affinity Purified
Conjugation:	Unconjugated
Storage:	Store at -20°C as received.
Stability:	Stable for 12 months from date of receipt.
Predicted Protein Size:	46 kDa
Gene Name:	zinc finger protein 302
Database Link:	<a href="#">NP_060913</a> <a href="#">Entrez Gene 55900 Human</a> <a href="#">Q9NR11</a>
Background:	ZNF302 belongs to the krueppel C2H2-type zinc-finger protein family. It contains 7 C2H2-type zinc fingers and 1 KRAB domain. ZNF302 may be involved in transcriptional regulation.
Synonyms:	HSD16; MST154; MSTP154; ZNF135L; ZNF140L; ZNF327
Note:	Immunogen Sequence Homology: Dog: 100%; Pig: 100%; Rat: 100%; Goat: 100%; Horse: 100%; Human: 100%; Mouse: 100%; Bovine: 100%; Zebrafish: 100%; Guinea pig: 100%; Rabbit: 86%



[View online »](#)

Protein Families: Transcription Factors

**Product images:**



WB Suggested Anti-ZNF302 Antibody Titration:  
0.2-1 ug/ml; ELISA Titer: 1:62500; Positive Control:  
Human Small Intestine