

Product datasheet for **TA338035**

EAF2 Rabbit Polyclonal Antibody

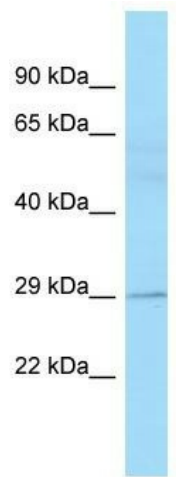
Product data:

Product Type:	Primary Antibodies
Applications:	WB
Recommended Dilution:	WB
Reactivity:	Human
Host:	Rabbit
Isotype:	IgG
Clonality:	Polyclonal
Immunogen:	The immunogen for anti-EAF2 antibody is: synthetic peptide directed towards the C-terminal region of Human EAF2. Synthetic peptide located within the following region: SSSEDSSEDEDEDCKSSTSDTGNCVSGHPTMTQYRIPDIDASHNRFRD
Formulation:	Liquid. Purified antibody supplied in 1x PBS buffer with 0.09% (w/v) sodium azide and 2% sucrose. <i>Note that this product is shipped as lyophilized powder to China customers.</i>
Purification:	Affinity Purified
Conjugation:	Unconjugated
Storage:	Store at -20°C as received.
Stability:	Stable for 12 months from date of receipt.
Predicted Protein Size:	29 kDa
Gene Name:	ELL associated factor 2
Database Link:	NP_060926 Entrez Gene 55840 Human Q96CJ1
Background:	EAF2 acts as a transcriptional transactivator of TCEA1 elongation activity and a transcriptional transactivator of ELL and ELL2 elongation activities. EAF2 is a potent inducer of apoptosis in prostatic and non-prostatic cell lines and inhibits prostate tumor growth in vivo.
Synonyms:	BM040; TRAITS; U19
Note:	Immunogen Sequence Homology: Human: 100%

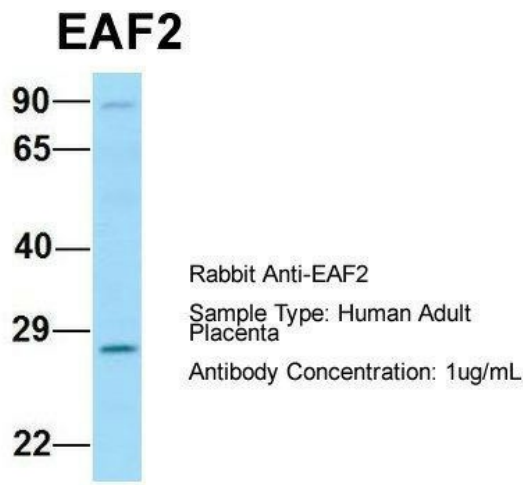


[View online »](#)

Product images:



WB Suggested Anti-EAF2 Antibody; Titration: 1.0 ug/ml; Positive Control: Fetal Lung



Host: Rabbit; Target Name: EAF2; Sample Tissue: Human Adult Placenta; Antibody Dilution: 1.0 ug/ml