

## Product datasheet for **TA338034**

### CISD1 Rabbit Polyclonal Antibody

#### Product data:

Product Type:	Primary Antibodies
Applications:	WB
Recommended Dilution:	WB
Reactivity:	Human
Host:	Rabbit
Isotype:	IgG
Clonality:	Polyclonal
Immunogen:	The immunogen for anti-CISD1 antibody is: synthetic peptide directed towards the C-terminal region of Human CISD1. Synthetic peptide located within the following region: PKIVHAFDMEDLGDKAVYCRWRSKKFPFCGHAHTKHNEETGDNVGPLII
Formulation:	Liquid. Purified antibody supplied in 1x PBS buffer with 0.09% (w/v) sodium azide and 2% sucrose. <i>Note that this product is shipped as lyophilized powder to China customers.</i>
Purification:	Affinity Purified
Conjugation:	Unconjugated
Storage:	Store at -20°C as received.
Stability:	Stable for 12 months from date of receipt.
Predicted Protein Size:	12 kDa
Gene Name:	CDGSH iron sulfur domain 1
Database Link:	<a href="#">NP_060934</a> <a href="#">Entrez Gene 55847 Human</a> <a href="#">Q9NZ45</a>
Background:	This gene encodes a protein with a CDGSH iron-sulfur domain and has been shown to bind a redox-active [2Fe-2S] cluster. The encoded protein has been localized to the outer membrane of mitochondria and is thought to play a role in regulation of oxidation. Genes encoding similar proteins are located on chromosomes 4 and 17, and a pseudogene of this gene is located on chromosome 2.
Synonyms:	C10orf70; MDS029; mitoNEET; ZCD1

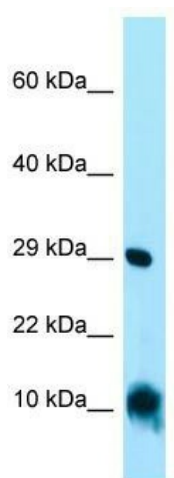


[View online »](#)

**Note:** Immunogen Sequence Homology: Human: 100%; Dog: 93%; Pig: 93%; Rat: 93%; Goat: 93%; Horse: 93%; Mouse: 93%; Bovine: 93%; Rabbit: 93%; Zebrafish: 93%; Guinea pig: 93%

**Protein Families:** Transmembrane

**Product images:**



WB Suggested Anti-CISD1 Antibody; Titration: 1.0 ug/ml; Positive Control: HepG2 Whole Cell