

## Product datasheet for **TA338033**

### SIRPG Rabbit Polyclonal Antibody

#### Product data:

Product Type:	Primary Antibodies
Applications:	WB
Recommended Dilution:	WB
Reactivity:	Human
Host:	Rabbit
Isotype:	IgG
Clonality:	Polyclonal
Immunogen:	The immunogen for anti-SIRPG antibody is: synthetic peptide directed towards the middle region of Human SIRPG. Synthetic peptide located within the following region: MDFSIRISSITPADVGTYYCVKFRKGSPEVFEKSGPGTEMALGAKPSA
Formulation:	Liquid. Purified antibody supplied in 1x PBS buffer with 0.09% (w/v) sodium azide and 2% sucrose. <i>Note that this product is shipped as lyophilized powder to China customers.</i>
Purification:	Affinity Purified
Conjugation:	Unconjugated
Storage:	Store at -20°C as received.
Stability:	Stable for 12 months from date of receipt.
Predicted Protein Size:	30 kDa
Gene Name:	signal regulatory protein gamma
Database Link:	<a href="#">NP_061026</a> <a href="#">Entrez Gene 55423 Human</a> <a href="#">Q9P1W8</a>
Background:	The protein encoded by this gene is a member of the signal-regulatory protein (SIRP) family, and also belongs to the immunoglobulin superfamily. SIRP family members are receptor-type transmembrane glycoproteins known to be involved in the negative regulation of receptor tyrosine kinase-coupled signaling processes. Alternatively spliced transcript variants encoding different isoforms have been described.
Synonyms:	bA77C3.1; CD172g; SIRP-B2; SIRPB2; SIRPgamma

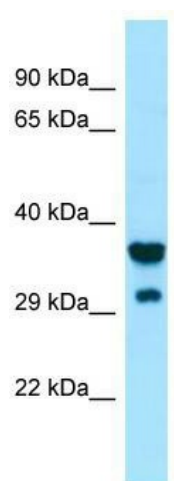


[View online »](#)

**Note:** Immunogen Sequence Homology: Human: 100%; Bovine: 100%; Horse: 85%

**Protein Families:** Druggable Genome, Transmembrane

**Product images:**



Host: Rabbit; Target Name: SIRPG; Sample Tissue: ACHN Whole Cell lysates; Antibody Dilution: 1.0 ug/ml