

Product datasheet for **TA338032**

GPR85 Rabbit Polyclonal Antibody

Product data:

| | |
|-------------------------|--|
| Product Type: | Primary Antibodies |
| Applications: | WB |
| Recommended Dilution: | WB |
| Reactivity: | Human |
| Host: | Rabbit |
| Isotype: | IgG |
| Clonality: | Polyclonal |
| Immunogen: | The immunogen for anti-GPR85 antibody is: synthetic peptide directed towards the N-terminal region of Human GPR85. Synthetic peptide located within the following region: YFLLDLCCSDILRSAICFPFVFNKNGSTWYGTLTCKVIAFLGVLSCF |
| Formulation: | Liquid. Purified antibody supplied in 1x PBS buffer with 0.09% (w/v) sodium azide and 2% sucrose. <i>Note that this product is shipped as lyophilized powder to China customers.</i> |
| Purification: | Affinity Purified |
| Conjugation: | Unconjugated |
| Storage: | Store at -20°C as received. |
| Stability: | Stable for 12 months from date of receipt. |
| Predicted Protein Size: | 42 kDa |
| Gene Name: | G protein-coupled receptor 85 |
| Database Link: | NP_061843 Entrez Gene 54329 Human P60893 |
| Background: | Members of the G protein-coupled receptor (GPCR) family, such as GPR85, have a similar structure characterized by 7 transmembrane domains. Activation of GPCRs by extracellular stimuli, such as neurotransmitters, hormones, or light, induces an intracellular signaling cascade mediated by heterotrimeric GTP-binding proteins, or G proteins. |
| Synonyms: | SREB; SREB2 |

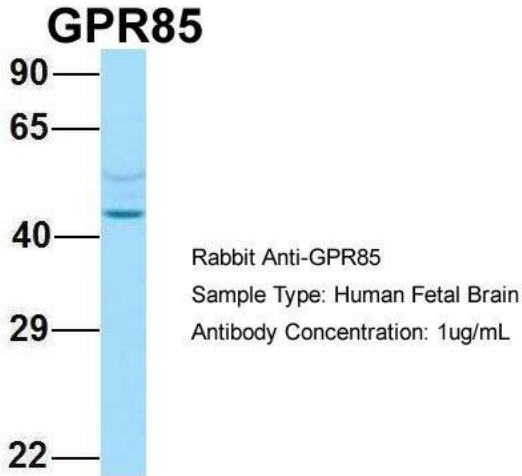


[View online »](#)

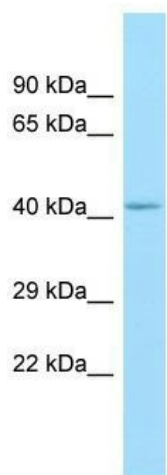
Note: Immunogen Sequence Homology: Dog: 100%; Pig: 100%; Rat: 100%; Horse: 100%; Human: 100%; Mouse: 100%; Bovine: 100%; Rabbit: 100%; Guinea pig: 100%

Protein Families: Druggable Genome, GPCR, Transmembrane

Product images:



Host: Rabbit; Target Name: GPR85; Sample Tissue: Human Fetal Brain; Antibody Dilution: 1.0 ug/ml



WB Suggested Anti-GPR85 Antibody; Titration: 1.0 ug/ml; Positive Control: NCI-H226 Whole Cell
GPR85 is supported by BioGPS gene expression data to be expressed in NCIH226