

## Product datasheet for **TA338031**

### WDR45L (WDR45B) Rabbit Polyclonal Antibody

#### Product data:

Product Type:	Primary Antibodies
Applications:	WB
Recommended Dilution:	WB
Reactivity:	Human
Host:	Rabbit
Isotype:	IgG
Clonality:	Polyclonal
Immunogen:	The immunogen for anti-WDR45L antibody: synthetic peptide directed towards the middle region of human WDR45L. Synthetic peptide located within the following region: DIPAHEGVLSCIALNLQGTRIATASEKGLIRIFDTS SGHLIQELRRGSQ
Formulation:	Liquid. Purified antibody supplied in 1x PBS buffer with 0.09% (w/v) sodium azide and 2% sucrose.
Purification:	Affinity Purified
Conjugation:	Unconjugated
Storage:	Store at -20°C as received.
Stability:	Stable for 12 months from date of receipt.
Predicted Protein Size:	38 kDa
Gene Name:	WD repeat domain 45B
Database Link:	<a href="#">NP_062559</a> <a href="#">Entrez Gene 56270 Human</a> <a href="#">Q5MNZ6</a>



[View online »](#)

**Background:**

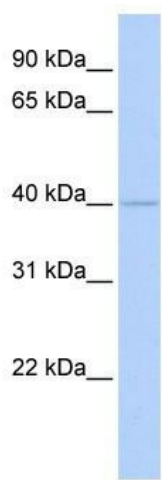
WDR45L is a member of the WIPI or SVP1 family of WD40 repeat-containing proteins. The protein contains seven WD40 repeats that are thought to fold into a beta-propeller structure that mediates protein-protein interactions, and a conserved motif for interaction with phospholipids. The human genome contains several pseudogenes of this gene. This gene encodes a member of the WIPI or SVP1 family of WD40 repeat-containing proteins. The protein contains seven WD40 repeats that are thought to fold into a beta-propeller structure that mediates protein-protein interactions, and a conserved motif for interaction with phospholipids. The human genome contains several pseudogenes of this gene.

**Synonyms:**

WDR45L; WIPI-3; WIPI3

**Note:**

Immunogen Sequence Homology: Dog: 100%; Pig: 100%; Rat: 100%; Horse: 100%; Human: 100%; Mouse: 100%; Bovine: 100%; Guinea pig: 100%; Rabbit: 93%; Zebrafish: 93%

**Product images:**

WB Suggested Anti-WDR45L Antibody Titration:  
0.2-1 ug/ml; ELISA Titer: 1:62500; Positive Control:  
MCF7 cell lysate