

Product datasheet for **TA338029**

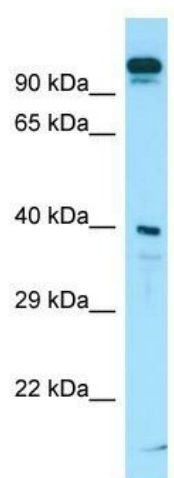
SLC7A10 Rabbit Polyclonal Antibody

Product data:

Product Type:	Primary Antibodies
Applications:	WB
Recommended Dilution:	WB
Reactivity:	Human
Host:	Rabbit
Isotype:	IgG
Clonality:	Polyclonal
Immunogen:	The immunogen for anti-SLC7A10 antibody is: synthetic peptide directed towards the C-terminal region of Human SLC7A10. Synthetic peptide located within the following region: KCVHRLTESMTHWGQELCFVYPQDAPEEEENGPCPPSLLPATDKPSKPQ
Formulation:	Liquid. Purified antibody supplied in 1x PBS buffer with 0.09% (w/v) sodium azide and 2% sucrose.
Purification:	Affinity Purified
Conjugation:	Unconjugated
Storage:	Store at -20°C as received.
Stability:	Stable for 12 months from date of receipt.
Predicted Protein Size:	40 kDa
Gene Name:	solute carrier family 7 member 10
Database Link:	NP_062823 Entrez Gene 56301 Human Q9NS82
Background:	The function of this protein remains unknown.
Synonyms:	asc-1; ASC1; HASC-1
Note:	Immunogen Sequence Homology: Human: 100%
Protein Families:	Druggable Genome, Transmembrane



[View online »](#)

Product images:

Host: Rabbit; Target Name: SLC7A10; Sample
Tissue: ACHN Whole Cell lysates; Antibody
Dilution: 1.0 ug/ml