

Product datasheet for **TA338027**

START domain containing 7 (STARD7) Rabbit Polyclonal Antibody

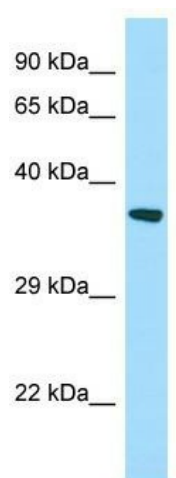
Product data:

Product Type:	Primary Antibodies
Applications:	WB
Recommended Dilution:	WB
Reactivity:	Human
Host:	Rabbit
Isotype:	IgG
Clonality:	Polyclonal
Immunogen:	The immunogen for anti-STARD7 antibody is: synthetic peptide directed towards the N-terminal region of Human STARD7. Synthetic peptide located within the following region: SINEMKRLEEMSNMFQSSGVQHHPPEPKAQTEGNEDESEGKEQRWEMVMDK
Formulation:	Liquid. Purified antibody supplied in 1x PBS buffer with 0.09% (w/v) sodium azide and 2% sucrose.
Purification:	Affinity Purified
Conjugation:	Unconjugated
Storage:	Store at -20°C as received.
Stability:	Stable for 12 months from date of receipt.
Predicted Protein Size:	37 kDa
Gene Name:	StAR related lipid transfer domain containing 7
Database Link:	NP_064536 Entrez Gene 56910 Human Q9NQZ5
Background:	Although the function of this gene is not known, its existence is supported by mRNA and EST data. The predicted gene product contains a region similar to the STAR-related lipid transfer (START) domain, which is often present in proteins involved in the cell signaling mediated by lipid binding. Alternatively spliced transcript variants have been described, although some transcripts occur only in cancer cell lines.
Synonyms:	GTT1
Note:	Immunogen Sequence Homology: Human: 100%; Pig: 86%; Dog: 79%; Horse: 79%



[View online »](#)

Product images:



WB Suggested Anti-STARD7 Antibody; Titration:
1.0 ug/ml; Positive Control: HT1080 Whole Cell