

Product datasheet for **TA338026**

Repulsive Guidance Molecule A (RGMA) Rabbit Polyclonal Antibody

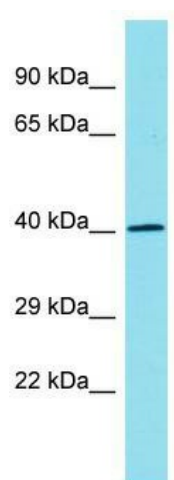
Product data:

Product Type:	Primary Antibodies
Applications:	WB
Recommended Dilution:	WB
Reactivity:	Mouse
Host:	Rabbit
Isotype:	IgG
Clonality:	Polyclonal
Immunogen:	The immunogen for anti-Rgma antibody is: synthetic peptide directed towards the N-terminal region of Mouse Rgma. Synthetic peptide located within the following region: LPPAGDSQERSDSPEICHYEKSFHKHSAAPNYTHCGLFGDPLRTFTDHF
Formulation:	Liquid. Purified antibody supplied in 1x PBS buffer with 0.09% (w/v) sodium azide and 2% sucrose. <i>Note that this product is shipped as lyophilized powder to China customers.</i>
Purification:	Affinity Purified
Conjugation:	Unconjugated
Storage:	Store at -20°C as received.
Stability:	Stable for 12 months from date of receipt.
Predicted Protein Size:	38 kDa
Gene Name:	repulsive guidance molecule family member a
Database Link:	NP_064596 Entrez Gene 244058 Mouse Q96B86
Background:	The function of this protein remains unknown.
Synonyms:	RGM
Note:	Immunogen Sequence Homology: Pig: 100%; Rat: 100%; Human: 100%; Mouse: 100%; Guinea pig: 100%; Horse: 93%; Bovine: 93%; Rabbit: 92%; Dog: 86%



[View online »](#)

Product images:



Host: Rabbit; Target Name: Rgma; Sample Tissue: Mouse Heart lysates; Antibody Dilution: 1.0 ug/ml