

Product datasheet for **TA338020**

ABHD6 Rabbit Polyclonal Antibody

Product data:

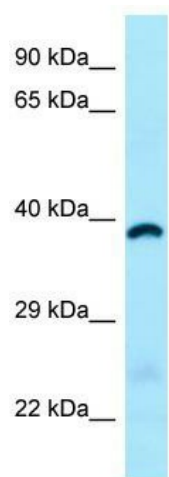
| | |
|-------------------------|--|
| Product Type: | Primary Antibodies |
| Applications: | WB |
| Recommended Dilution: | WB |
| Reactivity: | Human |
| Host: | Rabbit |
| Isotype: | IgG |
| Clonality: | Polyclonal |
| Immunogen: | The immunogen for anti-ABHD6 antibody is: synthetic peptide directed towards the C-terminal region of Human ABHD6. Synthetic peptide located within the following region: MLAKSIANCQVELLENCGHSVVMERPRKTAKLIIDFLASVHNTDNNKKLD |
| Formulation: | Liquid. Purified antibody supplied in 1x PBS buffer with 0.09% (w/v) sodium azide and 2% sucrose. <i>Note that this product is shipped as lyophilized powder to China customers.</i> |
| Purification: | Affinity Purified |
| Conjugation: | Unconjugated |
| Storage: | Store at -20°C as received. |
| Stability: | Stable for 12 months from date of receipt. |
| Predicted Protein Size: | 38 kDa |
| Gene Name: | abhydrolase domain containing 6 |
| Database Link: | NP_065727 Entrez Gene 57406 Human Q9BV23 |
| Background: | ABHD6 has 2-arachidonoylglycerol hydrolase activity. ABHD6 may be a regulator of endocannabinoid signaling pathways. |
| Synonyms: | abhydrolase domain containing 6; lipase protein |
| Note: | Immunogen Sequence Homology: Human: 100%; Rabbit: 100%; Pig: 93%; Guinea pig: 93%; Rat: 86%; Mouse: 86%; Bovine: 86%; Dog: 79% |



[View online »](#)

Protein Families: Transmembrane

Product images:



WB Suggested Anti-ABHD6 Antibody; Titration:
1.0 ug/ml; Positive Control: Fetal Heart