

## Product datasheet for **TA338019**

### CC2D2A Rabbit Polyclonal Antibody

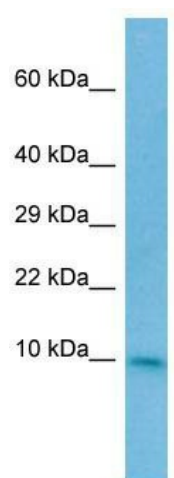
#### Product data:

Product Type:	Primary Antibodies
Applications:	WB
Recommended Dilution:	WB
Reactivity:	Human
Host:	Rabbit
Isotype:	IgG
Clonality:	Polyclonal
Immunogen:	The immunogen for anti-CC2D2A antibody is: synthetic peptide directed towards the N-terminal region of Human CC2D2A. Synthetic peptide located within the following region: EDADMGRQNKNSKVRQRKKQKPTPFSRACWQILPHLSAGVPLLGWEHP
Formulation:	Liquid. Purified antibody supplied in 1x PBS buffer with 0.09% (w/v) sodium azide and 2% sucrose. <i>Note that this product is shipped as lyophilized powder to China customers.</i>
Purification:	Affinity Purified
Conjugation:	Unconjugated
Storage:	Store at -20°C as received.
Stability:	Stable for 12 months from date of receipt.
Predicted Protein Size:	14 kDa
Gene Name:	coiled-coil and C2 domain containing 2A
Database Link:	<a href="#">NP_065836</a> <a href="#">Entrez Gene 57545 Human Q9P2K1</a>
Background:	This gene encodes a coiled-coil and calcium binding domain protein that appears to play a critical role in cilia formation. Mutations in this gene cause Meckel syndrome type 6, as well as Joubert syndrome type 9. Alternative splicing results in multiple transcript variants.
Synonyms:	JBTS9; MKS6
Note:	Immunogen Sequence Homology: Human: 100%; Mouse: 92%; Pig: 77%; Guinea pig: 77%



[View online »](#)

## Product images:



WB Suggested Anti-CC2D2A Antibody; Titration:  
1.0 ug/ml; Positive Control: MDA-MB-435S Whole  
Cell