

Product datasheet for **TA338017**

MST1 Rabbit Polyclonal Antibody

Product data:

Product Type:	Primary Antibodies
Applications:	WB
Recommended Dilution:	WB
Reactivity:	Human
Host:	Rabbit
Isotype:	IgG
Clonality:	Polyclonal
Immunogen:	The immunogen for anti-MST1 antibody is: synthetic peptide directed towards the N-terminal region of Human MST1. Synthetic peptide located within the following region: TQCLGVPGQRSPLNDFQVLRGTELQHLLHAVVPGPWQEDVADAEECAGRC
Formulation:	Liquid. Purified antibody supplied in 1x PBS buffer with 0.09% (w/v) sodium azide and 2% sucrose. <i>Note that this product is shipped as lyophilized powder to China customers.</i>
Purification:	Affinity Purified
Conjugation:	Unconjugated
Storage:	Store at -20°C as received.
Stability:	Stable for 12 months from date of receipt.
Predicted Protein Size:	78 kDa
Gene Name:	macrophage stimulating 1
Database Link:	NP_066278 Entrez Gene 4485 Human P26927

Background: The protein encoded by this gene contains four kringle domains and a serine protease domain, similar to that found in hepatic growth factor. Despite the presence of the serine protease domain, the encoded protein may not have any proteolytic activity. The receptor for this protein is RON tyrosine kinase, which upon activation stimulates ciliary motility of ciliated epithelial lung cells. This protein is secreted and cleaved to form an alpha chain and a beta chain bridged by disulfide bonds. [provided by RefSeq, Jan 2010]



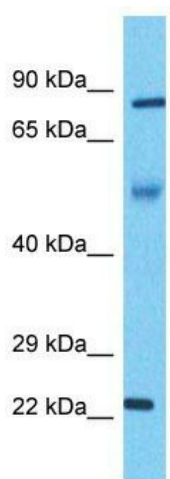
[View online »](#)

Synonyms: D3F15S2; DNF15S2; HGFL; MSP; NF15S2

Note: Immunogen Sequence Homology: Dog: 100%; Pig: 100%; Rat: 100%; Human: 100%; Mouse: 100%; Guinea pig: 100%; Horse: 93%; Bovine: 93%; Rabbit: 86%

Protein Families: Druggable Genome

Product images:



Host: Rabbit

Target Name: MST1

Sample Tissue: Thymus Tumor Lysate

Antibody Dilution: 1.0 μ g/ml

Host: Rabbit; Target Name: MST1; Sample Tissue: Thymus Tumor lysates; Antibody Dilution: 1.0 ug/ml