

## Product datasheet for **TA338014**

### PSIP1 Rabbit Polyclonal Antibody

#### Product data:

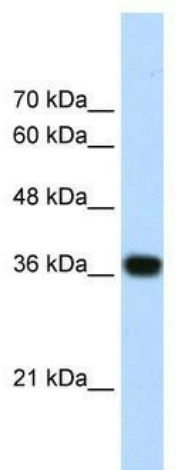
Product Type:	Primary Antibodies
Applications:	WB
Recommended Dilution:	WB
Reactivity:	Human
Host:	Rabbit
Isotype:	IgG
Clonality:	Polyclonal
Immunogen:	The immunogen for anti-PSIP1 antibody: synthetic peptide directed towards the N terminal of human PSIP1. Synthetic peptide located within the following region: DNNPKVKFSSQQAATKQSNASSDVEVEEKETSVSKEDTDHEEKASNEDVT
Formulation:	Liquid. Purified antibody supplied in 1x PBS buffer with 0.09% (w/v) sodium azide and 2% sucrose. <i>Note that this product is shipped as lyophilized powder to China customers.</i>
Purification:	Protein A purified
Conjugation:	Unconjugated
Storage:	Store at -20°C as received.
Stability:	Stable for 12 months from date of receipt.
Predicted Protein Size:	38 kDa
Gene Name:	PC4 and SFRS1 interacting protein 1
Database Link:	<a href="#">NP_066967</a> <a href="#">Entrez Gene 11168 Human O75475</a>
Background:	PSIP1 encodes a multidomain adaptor protein that interacts with the nuclear import apparatus, lentiviral IN proteins and chromatin by means of an NLS, an IBD and additional chromatin-interacting domains.
Synonyms:	DFS70; LEDGF; p52; p75; PAIP; PSIP2
Note:	Immunogen Sequence Homology: Dog: 100%; Pig: 100%; Horse: 100%; Human: 100%; Sheep: 100%; Bovine: 100%; Rabbit: 100%; Rat: 93%; Guinea pig: 93%; Mouse: 86%



[View online »](#)

Protein Families: Stem cell - Pluripotency, Transcription Factors

### Product images:



WB Suggested Anti-PSIP1 Antibody Titration: 1.25 ug/ml; Positive Control: HepG2 cell lysate