

Product datasheet for **TA338011**

Glp1r Rabbit Polyclonal Antibody

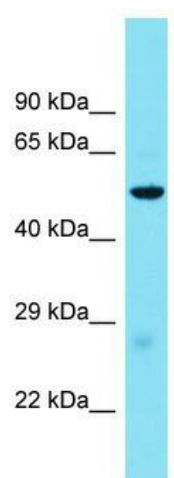
Product data:

Product Type:	Primary Antibodies
Applications:	WB
Recommended Dilution:	WB
Reactivity:	Mouse
Host:	Rabbit
Isotype:	IgG
Clonality:	Polyclonal
Immunogen:	The immunogen for anti-Glp1r antibody is: synthetic peptide directed towards the middle region of Mouse Glp1r. Synthetic peptide located within the following region: YRFCTAEGWLHKDNSSLPWRDLSECEESKRGERNFPPEQLLSLYIYTV
Formulation:	Liquid. Purified antibody supplied in 1x PBS buffer with 0.09% (w/v) sodium azide and 2% sucrose. <i>Note that this product is shipped as lyophilized powder to China customers.</i>
Purification:	Affinity Purified
Conjugation:	Unconjugated
Storage:	Store at -20°C as received.
Stability:	Stable for 12 months from date of receipt.
Predicted Protein Size:	51 kDa
Gene Name:	glucagon-like peptide 1 receptor
Database Link:	NP_067307 Entrez Gene 14652 Mouse O35659
Background:	The function of this protein remains unknown.
Synonyms:	GLP-1-R; GLP-1R; MGC138331
Note:	Immunogen Sequence Homology: Dog: 100%; Rat: 100%; Human: 100%; Pig: 93%; Guinea pig: 93%; Mouse: 86%; Sheep: 86%; Bovine: 86%; Rabbit: 86%



[View online »](#)

Product images:



Host: Rabbit; Target Name: Glp1r; Sample Tissue: Mouse Liver lysates; Antibody Dilution: 1.0 ug/ml