

Product datasheet for **TA338009**

LAIR1 Rabbit Polyclonal Antibody

Product data:

Product Type:	Primary Antibodies
Applications:	WB
Recommended Dilution:	WB
Reactivity:	Human
Host:	Rabbit
Isotype:	IgG
Clonality:	Polyclonal
Immunogen:	The immunogen for anti-LAIR1 antibody is: synthetic peptide directed towards the C-terminal region of Human LAIR1. Synthetic peptide located within the following region: LLVLFCLHRQNQIKQGPPRSKDDEEQKPQQRPD LAVDVLERTADKATVNGL
Formulation:	Liquid. Purified antibody supplied in 1x PBS buffer with 0.09% (w/v) sodium azide and 2% sucrose. <i>Note that this product is shipped as lyophilized powder to China customers.</i>
Purification:	Affinity Purified
Conjugation:	Unconjugated
Storage:	Store at -20°C as received.
Stability:	Stable for 12 months from date of receipt.
Predicted Protein Size:	27 kDa
Gene Name:	leukocyte associated immunoglobulin like receptor 1
Database Link:	NP_068352 Entrez Gene 3903 Human Q6GTX8

Background: The protein encoded by this gene is an inhibitory receptor found on peripheral mononuclear cells, including NK cells, T cells, and B cells. Inhibitory receptors regulate the immune response to prevent lysis of cells recognized as self. The gene is a member of both the immunoglobulin superfamily and the leukocyte-associated inhibitory receptor family. The gene maps to a region of 19q13.4 called the leukocyte receptor cluster, which contains at least 29 genes encoding leukocyte-expressed receptors of the immunoglobulin superfamily.



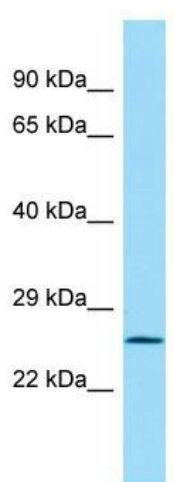
[View online »](#)

Synonyms: CD305; LAIR-1

Note: Immunogen Sequence Homology: Human: 100%

Protein Families: Transmembrane

Product images:



WB Suggested Anti-LAIR1 Antibody; Titration: 1.0 ug/ml; Positive Control: Fetal Kidney