

Product datasheet for **TA338007**

EEFSEC Rabbit Polyclonal Antibody

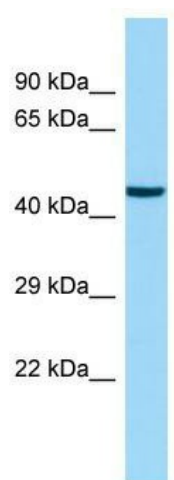
Product data:

Product Type:	Primary Antibodies
Applications:	WB
Recommended Dilution:	WB
Reactivity:	Human
Host:	Rabbit
Isotype:	IgG
Clonality:	Polyclonal
Immunogen:	The immunogen for anti-EEFSEC antibody is: synthetic peptide directed towards the C-terminal region of Human EEFSEC. Synthetic peptide located within the following region: AVTDNDEADKKAGQATEGHCPRQQWALVEFEKPVTCPRCLCLVIGSRLDAD
Formulation:	Liquid. Purified antibody supplied in 1x PBS buffer with 0.09% (w/v) sodium azide and 2% sucrose.
Purification:	Affinity Purified
Conjugation:	Unconjugated
Storage:	Store at -20°C as received.
Stability:	Stable for 12 months from date of receipt.
Predicted Protein Size:	47 kDa
Gene Name:	eukaryotic elongation factor, selenocysteine-tRNA specific
Database Link:	NP_068756 Entrez Gene 60678 Human P57772
Background:	The function of this protein remains unknown.
Synonyms:	EFSEC; SELB
Note:	Immunogen Sequence Homology: Human: 100%; Horse: 92%; Dog: 91%; Rat: 83%



[View online »](#)

Product images:



Host: Rabbit; Target Name: EEFSEC; Sample
Tissue: Placenta lysates; Antibody Dilution: 1.0
ug/ml