

Product datasheet for **TA338006**

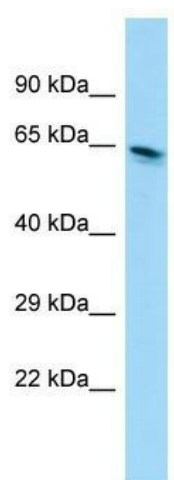
EEFSEC Rabbit Polyclonal Antibody

Product data:

| | |
|-------------------------|--|
| Product Type: | Primary Antibodies |
| Applications: | WB |
| Recommended Dilution: | WB |
| Reactivity: | Human |
| Host: | Rabbit |
| Isotype: | IgG |
| Clonality: | Polyclonal |
| Immunogen: | The immunogen for anti-EEFSEC antibody is: synthetic peptide directed towards the C-terminal region of Human EEFSEC. Synthetic peptide located within the following region: IHIPGGLSPESKKILTALKKRARAGRGEATRQEESAERSEPSQHVLSL |
| Formulation: | Liquid. Purified antibody supplied in 1x PBS buffer with 0.09% (w/v) sodium azide and 2% sucrose. |
| Purification: | Affinity Purified |
| Conjugation: | Unconjugated |
| Storage: | Store at -20°C as received. |
| Stability: | Stable for 12 months from date of receipt. |
| Predicted Protein Size: | 65 kDa |
| Gene Name: | eukaryotic elongation factor, selenocysteine-tRNA specific |
| Database Link: | NP_068756 Entrez Gene 60678 Human P57772 |
| Background: | EEFSEC is a translation factor necessary for the incorporation of selenocysteine into proteins. It probably replaces EF-Tu for the insertion of selenocysteine directed by the UGA codon. SelB binds GTP and GDP. |
| Synonyms: | EFSEC; SELB |
| Note: | Immunogen Sequence Homology: Human: 100% |


[View online »](#)

Product images:



WB Suggested Anti-EEFSEC Antibody; Titration:
1.0 ug/ml; Positive Control: 721_B Whole Cell