

## Product datasheet for **TA338005**

### Glycogen synthase 2 (GYS2) Rabbit Polyclonal Antibody

#### Product data:

Product Type:	Primary Antibodies
Applications:	WB
Recommended Dilution:	WB
Reactivity:	Human
Host:	Rabbit
Isotype:	IgG
Clonality:	Polyclonal
Immunogen:	The immunogen for anti-GYS2 antibody: synthetic peptide directed towards the middle region of human GYS2. Synthetic peptide located within the following region: TLSRAFPDKFHVLTSPPTTEGFKYPRPSSVPPSPSGSQASSQSSDVED
Formulation:	Liquid. Purified antibody supplied in 1x PBS buffer with 0.09% (w/v) sodium azide and 2% sucrose. <i>Note that this product is shipped as lyophilized powder to China customers.</i>
Purification:	Affinity Purified
Conjugation:	Unconjugated
Storage:	Store at -20°C as received.
Stability:	Stable for 12 months from date of receipt.
Predicted Protein Size:	81 kDa
Gene Name:	glycogen synthase 2
Database Link:	<a href="#">NP_068776</a> <a href="#">Entrez Gene 2998 Human</a> <a href="#">P54840</a>
Background:	The protein encoded by this gene, liver glycogen synthase, catalyzes the rate-limiting step in the synthesis of glycogen - the transfer of a glucose molecule from UDP-glucose to a terminal branch of the glycogen molecule. Mutations in this gene cause glycogen storage disease type 0 (GSD-0) - a rare type of early childhood fasting hypoglycemia with decreased liver glycogen content. [provided by RefSeq, Dec 2009]
Synonyms:	glycogen synthase 2 (liver)

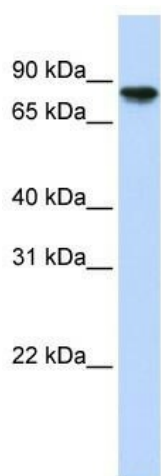


[View online »](#)

**Note:** Immunogen Sequence Homology: Dog: 100%; Pig: 100%; Rat: 100%; Horse: 100%; Human: 100%; Mouse: 100%; Bovine: 93%; Rabbit: 93%; Zebrafish: 93%; Guinea pig: 93%

**Protein Pathways:** Insulin signaling pathway, Starch and sucrose metabolism

**Product images:**



WB Suggested Anti-GYS2 Antibody Titration: 0.2-1 ug/ml; ELISA Titer: 1: 312500; Positive Control: Human Muscle