

Product datasheet for **TA338004**

NR0B2 Rabbit Polyclonal Antibody

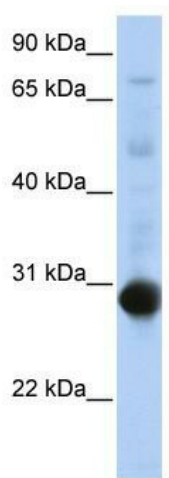
Product data:

Product Type:	Primary Antibodies
Applications:	IHC, WB
Recommended Dilution:	WB, IHC
Reactivity:	Human
Host:	Rabbit
Isotype:	IgG
Clonality:	Polyclonal
Immunogen:	The immunogen for anti-NR0B2 antibody: synthetic peptide directed towards the middle region of human NR0B2. Synthetic peptide located within the following region: AEAPVPSILKKILLEEPSSSGGSGQLPDRPQPSLAAVQWLQCCLEFWSL
Formulation:	Liquid. Purified antibody supplied in 1x PBS buffer with 0.09% (w/v) sodium azide and 2% sucrose. <i>Note that this product is shipped as lyophilized powder to China customers.</i>
Purification:	Affinity Purified
Conjugation:	Unconjugated
Storage:	Store at -20°C as received.
Stability:	Stable for 12 months from date of receipt.
Predicted Protein Size:	28 kDa
Gene Name:	nuclear receptor subfamily 0 group B member 2
Database Link:	NP_068804 Entrez Gene 8431 Human Q15466

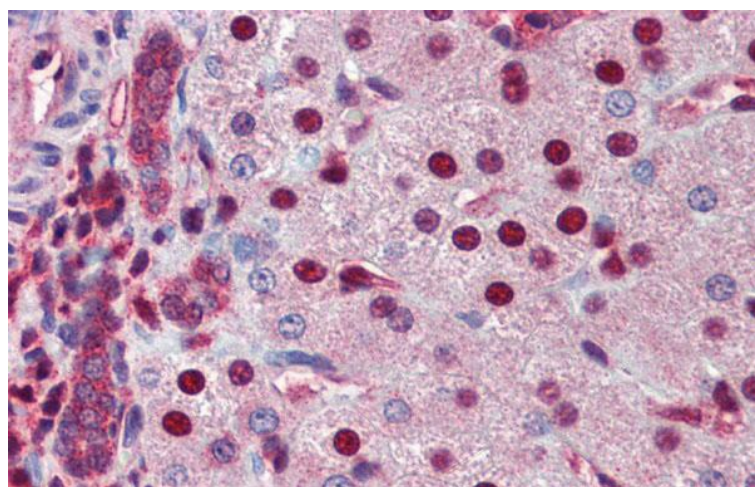


[View online »](#)

- Background:** The protein encoded by this gene is an unusual orphan receptor that contains a putative ligand-binding domain but lacks a conventional DNA-binding domain. The gene product is a member of the nuclear hormone receptor family, a group of transcription factors regulated by small hydrophobic hormones, a subset of which do not have known ligands and are referred to as orphan nuclear receptors. The protein has been shown to interact with retinoid and thyroid hormone receptors, inhibiting their ligand-dependent transcriptional activation. In addition, interaction with estrogen receptors has been demonstrated, leading to inhibition of function. Studies suggest that the protein represses nuclear hormone receptor-mediated transactivation via two separate steps: competition with coactivators and the direct effects of its transcriptional repressor function. [provided by RefSeq, Jul 2008]
- Synonyms:** SHP; SHP1
- Note:** Immunogen Sequence Homology: Dog: 100%; Human: 100%; Rabbit: 100%; Horse: 92%; Pig: 86%; Guinea pig: 86%; Rat: 79%
- Protein Families:** Druggable Genome, Transcription Factors

Product images:

WB Suggested Anti-NR0B2 Antibody Titration:
0.2-1 ug/ml; ELISA Titer: 1: 312500; Positive
Control: Transfected 293T



Immunohistochemistry with Human Liver cell lysate tissue at an antibody concentration of 5.0 ug/ml using anti-NR0B2 antibody