

## Product datasheet for **TA338000**

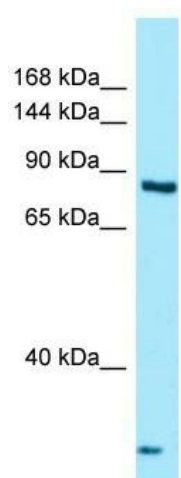
### THADA Rabbit Polyclonal Antibody

#### Product data:

Product Type:	Primary Antibodies
Applications:	WB
Recommended Dilution:	WB
Reactivity:	Human
Host:	Rabbit
Isotype:	IgG
Clonality:	Polyclonal
Immunogen:	The immunogen for anti-THADA antibody is: synthetic peptide directed towards the C-terminal region of Human THADA. Synthetic peptide located within the following region: SQVLYKLEQSKSKREPENELTKQHPSVSLQYKNFMSSICNSLFEALFPG
Formulation:	Liquid. Purified antibody supplied in 1x PBS buffer with 0.09% (w/v) sodium azide and 2% sucrose. <i>Note that this product is shipped as lyophilized powder to China customers.</i>
Purification:	Affinity Purified
Conjugation:	Unconjugated
Storage:	Store at -20°C as received.
Stability:	Stable for 12 months from date of receipt.
Predicted Protein Size:	95 kDa
Gene Name:	THADA, armadillo repeat containing
Database Link:	<a href="#">NP_071348</a> <a href="#">Entrez Gene 63892 Human</a> <a href="#">Q6YHU6</a>
Background:	The function of this protein remains unknown.
Synonyms:	ARMC13; GITA
Note:	Immunogen Sequence Homology: Human: 100%; Pig: 85%; Guinea pig: 85%; Dog: 79%; Horse: 79%; Bovine: 79%; Rabbit: 79%



[View online »](#)

**Product images:**


Host: Rabbit; Target Name: THADA; Sample  
Tissue: MCF7 Whole Cell lysates; Antibody  
Dilution: 1.0 ug/ml