

Product datasheet for **TA337999**

HRH2 Rabbit Polyclonal Antibody

Product data:

| | |
|-------------------------|--|
| Product Type: | Primary Antibodies |
| Applications: | WB |
| Recommended Dilution: | WB |
| Reactivity: | Human |
| Host: | Rabbit |
| Isotype: | IgG |
| Clonality: | Polyclonal |
| Immunogen: | The immunogen for anti-HRH2 antibody is: synthetic peptide directed towards the C-terminal region of Human HRH2. Synthetic peptide located within the following region: DFRTGYQQLFCCRLANRNSHKTSLSNASQLSRTQSREPRQQEEKPLKLQ |
| Formulation: | Liquid. Purified antibody supplied in 1x PBS buffer with 0.09% (w/v) sodium azide and 2% sucrose. <i>Note that this product is shipped as lyophilized powder to China customers.</i> |
| Purification: | Affinity Purified |
| Conjugation: | Unconjugated |
| Storage: | Store at -20°C as received. |
| Stability: | Stable for 12 months from date of receipt. |
| Predicted Protein Size: | 40 kDa |
| Gene Name: | histamine receptor H2 |
| Database Link: | NP_071640 Entrez Gene 3274 Human P25021 |



[View online »](#)

Background:

Histamine is a ubiquitous messenger molecule released from mast cells, enterochromaffin-like cells, and neurons. Its various actions are mediated by histamine receptors H1, H2, H3 and H4. Histamine receptor H2 belongs to the family 1 of G protein-coupled receptors. It is an integral membrane protein and stimulates gastric acid secretion. It also regulates gastrointestinal motility and intestinal secretion and is thought to be involved in regulating cell growth and differentiation. Alternatively spliced transcript variants encoding different isoforms have been found for this gene.

Synonyms:

H2R

Note:

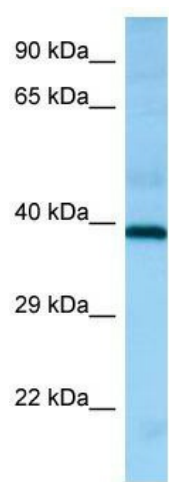
Immunogen Sequence Homology: Human: 100%; Rat: 85%; Horse: 79%; Dog: 77%

Protein Families:

Druggable Genome, GPCR, Transmembrane

Protein Pathways:

Calcium signaling pathway, Neuroactive ligand-receptor interaction

Product images:

WB Suggested Anti-HRH2 Antibody; Titration: 1.0 ug/ml; Positive Control: Fetal Brain