

## Product datasheet for **TA337998**

### SLC13A1 Rabbit Polyclonal Antibody

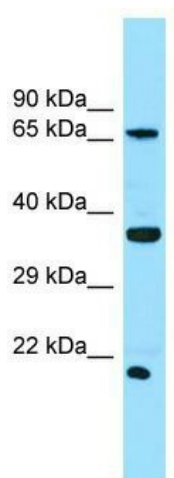
#### Product data:

Product Type:	Primary Antibodies
Applications:	WB
Recommended Dilution:	WB
Reactivity:	Human
Host:	Rabbit
Isotype:	IgG
Clonality:	Polyclonal
Immunogen:	The immunogen for anti-SLC13A1 antibody is: synthetic peptide directed towards the N-terminal region of Human SLC13A1. Synthetic peptide located within the following region: MTYFNGSTNHGLEIDESVNGHEINERKEKTKPVPGYNNDTGKISSKVELE
Formulation:	Liquid. Purified antibody supplied in 1x PBS buffer with 0.09% (w/v) sodium azide and 2% sucrose.
Purification:	Affinity Purified
Conjugation:	Unconjugated
Storage:	Store at -20°C as received.
Stability:	Stable for 12 months from date of receipt.
Predicted Protein Size:	66 kDa
Gene Name:	solute carrier family 13 member 1
Database Link:	<a href="#">NP_071889</a> <a href="#">Entrez Gene 6561 Human</a> <a href="#">Q9BZW2</a>
Background:	SLC13A1 is a sodium/sulfate cotransporter that mediates sulfate reabsorption in the kidney.
Synonyms:	NAS1; NaSi-1
Note:	Immunogen Sequence Homology: Human: 100%; Dog: 85%; Bovine: 85%
Protein Families:	Transmembrane



[View online »](#)

## Product images:



WB Suggested Anti-SLC13A1 Antibody; Titration:  
1.0 ug/ml; Positive Control: THP-1 Whole Cell