

Product datasheet for **TA337995**

Scube1 Rabbit Polyclonal Antibody

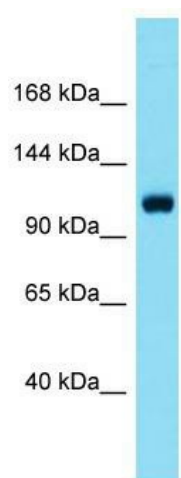
Product data:

Product Type:	Primary Antibodies
Applications:	WB
Recommended Dilution:	WB
Reactivity:	Mouse
Host:	Rabbit
Isotype:	IgG
Clonality:	Polyclonal
Immunogen:	The immunogen for anti-Scube1 antibody is: synthetic peptide directed towards the C-terminal region of Mouse Scube1. Synthetic peptide located within the following region: NCHVTFVTLKCDSSKKRRRGRKSPSKEVSHITAEFEVEMKVDEASGTCEA
Formulation:	Liquid. Purified antibody supplied in 1x PBS buffer with 0.09% (w/v) sodium azide and 2% sucrose.
Purification:	Affinity Purified
Conjugation:	Unconjugated
Storage:	Store at -20°C as received.
Stability:	Stable for 12 months from date of receipt.
Predicted Protein Size:	108 kDa
Gene Name:	signal peptide, CUB domain, EGF-like 1
Database Link:	NP_073560 Entrez Gene 64706 Mouse Q6NZL8
Background:	Scube1 could function as an adhesive molecule and its matrix bound and soluble fragments may play a critical role in vascular biology.
Synonyms:	SCUBE1
Note:	Immunogen Sequence Homology: Dog: 100%; Pig: 100%; Rat: 100%; Horse: 100%; Human: 100%; Mouse: 100%; Bovine: 100%; Rabbit: 100%; Zebrafish: 100%; Guinea pig: 100%



[View online »](#)

Product images:



Host: Rabbit; Target Name: Scube1; Sample
Tissue: Mouse Liver lysates; Antibody Dilution: 1.0
ug/ml