

Product datasheet for **TA337994**

CERK Rabbit Polyclonal Antibody

Product data:

Product Type:	Primary Antibodies
Applications:	WB
Recommended Dilution:	WB
Reactivity:	Human
Host:	Rabbit
Isotype:	IgG
Clonality:	Polyclonal
Immunogen:	The immunogen for anti-CERK antibody is: synthetic peptide directed towards the C-terminal region of Human CERK. Synthetic peptide located within the following region: FVEVYRVKKFQFTSKHMEDESDLKEGGKRFHGHCSSHPSCCCTVSNSS
Formulation:	Liquid. Purified antibody supplied in 1x PBS buffer with 0.09% (w/v) sodium azide and 2% sucrose. <i>Note that this product is shipped as lyophilized powder to China customers.</i>
Purification:	Affinity Purified
Conjugation:	Unconjugated
Storage:	Store at -20°C as received.
Stability:	Stable for 12 months from date of receipt.
Predicted Protein Size:	59 kDa
Gene Name:	ceramide kinase
Database Link:	NP_073603 Entrez Gene 64781 Human Q8TCT0
Background:	CERK converts ceramide to ceramide 1-phosphate (C1P), a sphingolipid metabolite. Both CERK and C1P have been implicated in various cellular processes, including proliferation, apoptosis, phagocytosis, and inflammation.
Synonyms:	dA59H18.2; dA59H18.3; hCERK; LK4
Note:	Immunogen Sequence Homology: Human: 100%; Dog: 86%; Rat: 79%; Horse: 79%

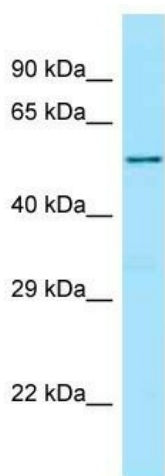


[View online »](#)

Protein Families: Druggable Genome

Protein Pathways: Metabolic pathways, Sphingolipid metabolism

Product images:



Host: Rabbit

Target Name: CERK

Sample Tissue: 721_B Cell Lysate

Antibody Dilution: 1.0µg/ml

Host: Rabbit; Target Name: CERK; Sample Tissue: 721_B Whole Cell lysates; Antibody Dilution: 1.0 ug/ml