

Product datasheet for **TA337993**

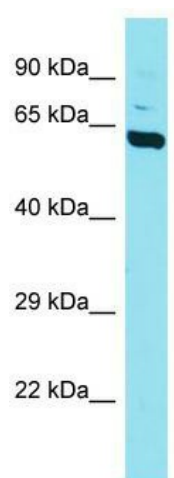
Dpysl5 Rabbit Polyclonal Antibody

Product data:

Product Type:	Primary Antibodies
Applications:	WB
Recommended Dilution:	WB
Reactivity:	Mouse
Host:	Rabbit
Isotype:	IgG
Clonality:	Polyclonal
Immunogen:	The immunogen for anti-Dpysl5 antibody is: synthetic peptide directed towards the C-terminal region of Mouse Dpysl5. Synthetic peptide located within the following region: LADTPTRPVTRHGGMRDLHESSFSLSGSQIDDHVPKRASARILAPPGGRS
Formulation:	Liquid. Purified antibody supplied in 1x PBS buffer with 0.09% (w/v) sodium azide and 2% sucrose. <i>Note that this product is shipped as lyophilized powder to China customers.</i>
Purification:	Affinity Purified
Conjugation:	Unconjugated
Storage:	Store at -20°C as received.
Stability:	Stable for 12 months from date of receipt.
Predicted Protein Size:	61 kDa
Gene Name:	dihydropyrimidinase-like 5
Database Link:	NP_075534 Entrez Gene 65254 Mouse Q9EQF6
Background:	Dpysl5 may have a function in neuronal differentiation and/or axon growth.
Synonyms:	CRAM; CRMP-5; CRMP5; DRP-5; FLJ45383; OTTHUMP00000200913; Ulip6
Note:	Immunogen Sequence Homology: Dog: 100%; Pig: 100%; Rat: 100%; Horse: 100%; Human: 100%; Mouse: 100%; Bovine: 100%; Rabbit: 100%; Guinea pig: 100%; Zebrafish: 86%



[View online »](#)

Product images:

Host: Rabbit; Target Name: Dpysl5; Sample
Tissue: Mouse Brain lysates; Antibody Dilution:
1.0 ug/ml