

Product datasheet for **TA337991**

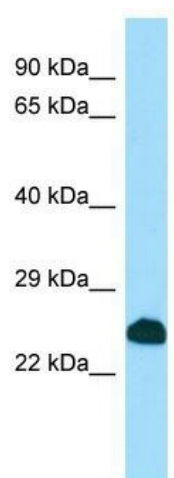
SCNM1 Rabbit Polyclonal Antibody

Product data:

Product Type:	Primary Antibodies
Applications:	WB
Recommended Dilution:	WB
Reactivity:	Human
Host:	Rabbit
Isotype:	IgG
Clonality:	Polyclonal
Immunogen:	The immunogen for anti-SCNM1 antibody is: synthetic peptide directed towards the C-terminal region of Human SCNM1. Synthetic peptide located within the following region: EVKLQSGKISREPEPAAGPQAEESATVSAPAPMSPTRRRALDHYLTLRSS
Formulation:	Liquid. Purified antibody supplied in 1x PBS buffer with 0.09% (w/v) sodium azide and 2% sucrose. <i>Note that this product is shipped as lyophilized powder to China customers.</i>
Purification:	Affinity Purified
Conjugation:	Unconjugated
Storage:	Store at -20°C as received.
Stability:	Stable for 12 months from date of receipt.
Predicted Protein Size:	26 kDa
Gene Name:	sodium channel modifier 1
Database Link:	NP_076946 Entrez Gene 79005 Human Q9BWG6
Background:	SCNM1 is a zinc finger protein and putative splicing factor. In mice, Scnm1 modifies phenotypic expression of Scn8a mutations.
Synonyms:	MGC3180
Note:	Immunogen Sequence Homology: Human: 100%; Horse: 79%; Rabbit: 79%



[View online »](#)

Product images:

WB Suggested Anti-SCNM1 Antibody; Titration:
1.0 ug/ml; Positive Control: HepG2 Whole Cell