

Product datasheet for **TA337990**

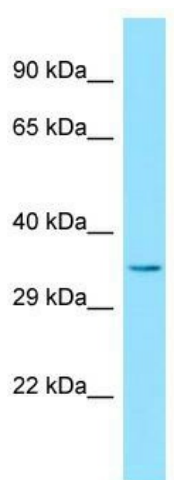
ERI3 Rabbit Polyclonal Antibody

Product data:

Product Type:	Primary Antibodies
Applications:	WB
Recommended Dilution:	WB
Reactivity:	Human
Host:	Rabbit
Isotype:	IgG
Clonality:	Polyclonal
Immunogen:	The immunogen for anti-ERI3 antibody is: synthetic peptide directed towards the C-terminal region of Human ERI3. Synthetic peptide located within the following region: KAYSFAMGCWPKNGLLDMNKGLSLQHIGRPHSGIDDCKNIANIMKTLAYR
Formulation:	Liquid. Purified antibody supplied in 1x PBS buffer with 0.09% (w/v) sodium azide and 2% sucrose. <i>Note that this product is shipped as lyophilized powder to China customers.</i>
Purification:	Affinity Purified
Conjugation:	Unconjugated
Storage:	Store at -20°C as received.
Stability:	Stable for 12 months from date of receipt.
Predicted Protein Size:	37 kDa
Gene Name:	ERI1 exoribonuclease family member 3
Database Link:	NP_076971 Entrez Gene 79033 Human O43414
Background:	The function of this protein remains unknown.
Synonyms:	PINT1; PRNPIP
Note:	Immunogen Sequence Homology: Dog: 100%; Pig: 100%; Rat: 100%; Horse: 100%; Human: 100%; Mouse: 100%; Bovine: 100%; Rabbit: 100%; Guinea pig: 100%



[View online »](#)

Product images:

WB Suggested Anti-ER13 Antibody; Titration: 1.0 ug/ml; Positive Control: 721_B Whole Cell ER13 is supported by BioGPS gene expression data to be expressed in 721_B