

## Product datasheet for **TA337989**

### MMP28 Rabbit Polyclonal Antibody

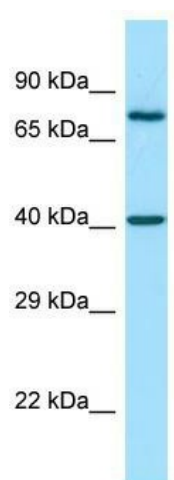
#### Product data:

Product Type:	Primary Antibodies
Applications:	WB
Recommended Dilution:	WB
Reactivity:	Human
Host:	Rabbit
Isotype:	IgG
Clonality:	Polyclonal
Immunogen:	The immunogen for anti-MMP28 antibody is: synthetic peptide directed towards the N-terminal region of Human MMP28. Synthetic peptide located within the following region: LDAQPAERGGQELRKEAEAFLEKYGYLNEQVPKAPTSTRFSDAIRAFQWW
Formulation:	Liquid. Purified antibody supplied in 1x PBS buffer with 0.09% (w/v) sodium azide and 2% sucrose. <i>Note that this product is shipped as lyophilized powder to China customers.</i>
Purification:	Affinity Purified
Conjugation:	Unconjugated
Storage:	Store at -20°C as received.
Stability:	Stable for 12 months from date of receipt.
Predicted Protein Size:	43 kDa
Gene Name:	matrix metalloproteinase 28
Database Link:	<a href="#">NP_077278</a> <a href="#">Entrez Gene 79148 Human Q9H239</a>
Background:	The function of this protein remains unknown.
Synonyms:	EPILYSIN; MM28; MMP-25; MMP-28; MMP25
Note:	Immunogen Sequence Homology: Human: 100%; Dog: 92%
Protein Families:	Druggable Genome, Protease, Secreted Protein



[View online »](#)

## Product images:



Host: Rabbit; Target Name: MMP28; Sample  
Tissue: THP-1 Whole Cell lysates; Antibody  
Dilution: 1.0 ug/ml