

## Product datasheet for **TA337988**

### GRLF1 (ARHGAP35) Rabbit Polyclonal Antibody

#### Product data:

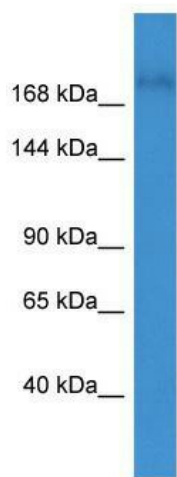
Product Type:	Primary Antibodies
Applications:	WB
Recommended Dilution:	WB
Reactivity:	Human
Host:	Rabbit
Isotype:	IgG
Clonality:	Polyclonal
Immunogen:	The immunogen for anti-GRLF1 antibody: synthetic peptide directed towards the N terminal of human GRLF1. Synthetic peptide located within the following region: RPSADEFHLDHTSVLSTDFGGRVNVNDHFLYWGEVSRSLIEDCVCKMHI
Formulation:	Liquid. Purified antibody supplied in 1x PBS buffer with 0.09% (w/v) sodium azide and 2% sucrose.
Purification:	Affinity Purified
Conjugation:	Unconjugated
Storage:	Store at -20°C as received.
Stability:	Stable for 12 months from date of receipt.
Predicted Protein Size:	171 kDa
Gene Name:	Rho GTPase activating protein 35
Database Link:	<a href="#">NP_077318</a> <a href="#">Entrez Gene 2909 Human</a> <a href="#">Q9NRY4</a>
Background:	The function of this protein remains unknown.
Synonyms:	glucocorticoid receptor DNA binding factor 1; GRF-1; KIAA1722; MGC10745; P190-A; P190A; p190RhoGAP
Note:	Immunogen Sequence Homology: Dog: 100%; Pig: 100%; Rat: 100%; Horse: 100%; Human: 100%; Mouse: 100%; Bovine: 100%; Rabbit: 100%; Guinea pig: 100%; Zebrafish: 93%
Protein Families:	Druggable Genome



[View online »](#)

Protein Pathways: Focal adhesion, Leukocyte transendothelial migration, Regulation of actin cytoskeleton

### Product images:



WB Suggested Anti-GRLF1 Antibody Titration: 0.2-1 ug/ml; ELISA Titer: 1:312500; Positive Control: Hela cell lysate