

Product datasheet for **TA337987**

CHMP6 Rabbit Polyclonal Antibody

Product data:

Product Type:	Primary Antibodies
Applications:	WB
Recommended Dilution:	WB
Reactivity:	Human
Host:	Rabbit
Isotype:	IgG
Clonality:	Polyclonal
Immunogen:	The immunogen for anti-CHMP6 antibody is: synthetic peptide directed towards the middle region of Human CHMP6. Synthetic peptide located within the following region: VMEGLQFGNECLNKMHQVMSIEEVERILDETQEAVEYQRQIDELLAGSFT
Formulation:	Liquid. Purified antibody supplied in 1x PBS buffer with 0.09% (w/v) sodium azide and 2% sucrose. <i>Note that this product is shipped as lyophilized powder to China customers.</i>
Purification:	Affinity Purified
Conjugation:	Unconjugated
Storage:	Store at -20°C as received.
Stability:	Stable for 12 months from date of receipt.
Predicted Protein Size:	23 kDa
Gene Name:	charged multivesicular body protein 6
Database Link:	NP_078867 Entrez Gene 79643 Human Q96FZ7
Background:	This gene encodes a member of the chromatin-modifying protein/charged multivesicular body protein family. Proteins in this family are part of the ESCRT-III (endosomal sorting complex required for transport III) which degrades surface receptors, and in biosynthesis of endosomes.
Synonyms:	VPS20

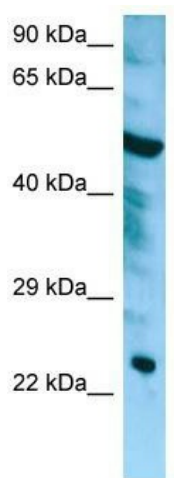


[View online »](#)

Note: Immunogen Sequence Homology: Pig: 100%; Rat: 100%; Horse: 100%; Human: 100%; Mouse: 100%; Guinea pig: 100%; Dog: 93%; Bovine: 93%

Protein Pathways: Endocytosis

Product images:



WB Suggested Anti-CHMP6 Antibody; Titration:
1.0 ug/ml; Positive Control: HepG2 Whole Cell