

Product datasheet for **TA337986**

BEN Domain Containing Protein 5 (BEND5) Rabbit Polyclonal Antibody

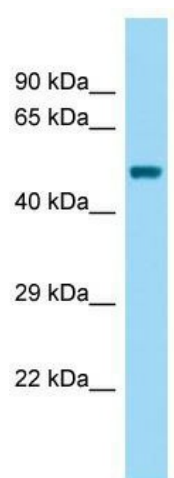
Product data:

Product Type:	Primary Antibodies
Applications:	WB
Recommended Dilution:	WB
Reactivity:	Human
Host:	Rabbit
Isotype:	IgG
Clonality:	Polyclonal
Immunogen:	The immunogen for anti-BEND5 antibody is: synthetic peptide directed towards the N-terminal region of Human BEND5. Synthetic peptide located within the following region: EDKSDLENSVMQKKIKIPKLSLNHVEEDGEVKDYGEEDLQLRHIKRPEGR
Formulation:	Liquid. Purified antibody supplied in 1x PBS buffer with 0.09% (w/v) sodium azide and 2% sucrose. <i>Note that this product is shipped as lyophilized powder to China customers.</i>
Purification:	Affinity Purified
Conjugation:	Unconjugated
Storage:	Store at -20°C as received.
Stability:	Stable for 12 months from date of receipt.
Predicted Protein Size:	48 kDa
Gene Name:	BEN domain containing 5
Database Link:	NP_078879 Entrez Gene 79656 Human Q7L4P6
Background:	The function of this protein remains unknown.
Synonyms:	C1orf165
Note:	Immunogen Sequence Homology: Human: 100%; Bovine: 100%; Dog: 93%; Mouse: 93%; Pig: 86%; Rat: 86%; Rabbit: 86%; Guinea pig: 86%



[View online »](#)

Product images:



WB Suggested Anti-BEND5 Antibody; Titration:
1.0 ug/ml; Positive Control: 293T Whole Cell