

Product datasheet for **TA337982**

L2HGDH Rabbit Polyclonal Antibody

Product data:

Product Type:	Primary Antibodies
Applications:	WB
Recommended Dilution:	WB
Reactivity:	Human
Host:	Rabbit
Isotype:	IgG
Clonality:	Polyclonal
Immunogen:	The immunogen for anti-L2HGDH antibody is: synthetic peptide directed towards the middle region of Human L2HGDH. Synthetic peptide located within the following region: GSVLTNFEVKGIEMAKESPSRSIDGMQYPIVIKNTKGEEIRCQYVWTCAG
Formulation:	Liquid. Purified antibody supplied in 1x PBS buffer with 0.09% (w/v) sodium azide and 2% sucrose. <i>Note that this product is shipped as lyophilized powder to China customers.</i>
Purification:	Affinity Purified
Conjugation:	Unconjugated
Storage:	Store at -20°C as received.
Stability:	Stable for 12 months from date of receipt.
Predicted Protein Size:	45 kDa
Gene Name:	L-2-hydroxyglutarate dehydrogenase
Database Link:	NP_079160 Entrez Gene 79944 Human Q9H9P8
Background:	This gene encodes L-2-hydroxyglutarate dehydrogenase, a FAD-dependent enzyme that oxidizes L-2-hydroxyglutarate to alpha-ketoglutarate in a variety of mammalian tissues. Mutations in this gene cause L-2-hydroxyglutaric aciduria, a rare autosomal recessive neurometabolic disorder resulting in moderate to severe mental retardation.
Synonyms:	C14orf160; L2HGA

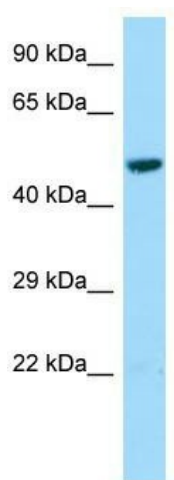


[View online »](#)

Note: Immunogen Sequence Homology: Pig: 100%; Human: 100%; Bovine: 91%; Dog: 86%; Horse: 86%; Rabbit: 86%; Guinea pig: 86%; Mouse: 79%

Protein Pathways: Butanoate metabolism

Product images:



Host: Rabbit; Target Name: L2HGDH; Sample Tissue: HepG2 Whole Cell lysates; Antibody Dilution: 1.0 ug/ml