

Product datasheet for **TA337980**

CEP135 Rabbit Polyclonal Antibody

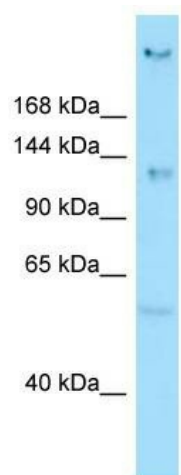
Product data:

| | |
|-------------------------|---|
| Product Type: | Primary Antibodies |
| Applications: | WB |
| Recommended Dilution: | WB |
| Reactivity: | Human |
| Host: | Rabbit |
| Isotype: | IgG |
| Clonality: | Polyclonal |
| Immunogen: | The immunogen for anti-CEP135 antibody is: synthetic peptide directed towards the N-terminal region of Human CEP135. Synthetic peptide located within the following region: REHSDQHVKELKTSLLKCCARETADLKFLNNQYAHKLKLEKESKAKNERI |
| Formulation: | Liquid. Purified antibody supplied in 1x PBS buffer with 0.09% (w/v) sodium azide and 2% sucrose. <i>Note that this product is shipped as lyophilized powder to China customers.</i> |
| Purification: | Affinity Purified |
| Conjugation: | Unconjugated |
| Storage: | Store at -20°C as received. |
| Stability: | Stable for 12 months from date of receipt. |
| Predicted Protein Size: | 133 kDa |
| Gene Name: | centrosomal protein 135 |
| Database Link: | NP_079285 Entrez Gene 9662 Human Q66GS9 |
| Background: | CEP135 is a centrosomal protein involved in centriole biogenesis. CEP135 acts as a scaffolding protein during early centriole biogenesis. CEP135 is also required for centriole-centriole cohesion during interphase by acting as a platform protein for CEP250 at the centriole. |
| Synonyms: | CEP4; KIAA0635; MCPH8 |
| Note: | Immunogen Sequence Homology: Human: 100%; Horse: 85%; Rabbit: 85%; Dog: 77%; Pig: 77%; Bovine: 77% |



[View online »](#)

Product images:



WB Suggested Anti-CEP135 Antibody; Titration:
1.0 ug/ml; Positive Control: A549 Whole Cell