

## Product datasheet for **TA337978**

### EDC3 Rabbit Polyclonal Antibody

#### Product data:

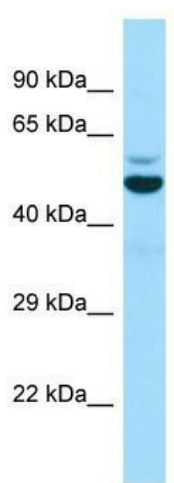
Product Type:	Primary Antibodies
Applications:	WB
Recommended Dilution:	WB
Reactivity:	Human
Host:	Rabbit
Isotype:	IgG
Clonality:	Polyclonal
Immunogen:	The immunogen for anti-EDC3 antibody is: synthetic peptide directed towards the middle region of Human EDC3. Synthetic peptide located within the following region: KKSGLKNGQMKNKDDECFGDDIEEIPDTDFDFEGNLALFDKAAVFEEIDT
Formulation:	Liquid. Purified antibody supplied in 1x PBS buffer with 0.09% (w/v) sodium azide and 2% sucrose. <i>Note that this product is shipped as lyophilized powder to China customers.</i>
Purification:	Affinity Purified
Conjugation:	Unconjugated
Storage:	Store at -20°C as received.
Stability:	Stable for 12 months from date of receipt.
Predicted Protein Size:	56 kDa
Gene Name:	enhancer of mRNA decapping 3
Database Link:	<a href="#">NP_079359</a> <a href="#">Entrez Gene 80153 Human</a> <a href="#">Q96F86</a>
Background:	EDC3 is associated with an mRNA-decapping complex required for removal of the 5-prime cap from mRNA prior to its degradation from the 5-prime end.
Synonyms:	LSM16; YJDC; YJEFN2
Note:	Immunogen Sequence Homology: Dog: 100%; Pig: 100%; Rat: 100%; Human: 100%; Mouse: 100%; Bovine: 100%; Guinea pig: 100%; Horse: 93%; Rabbit: 93%; Zebrafish: 87%



[View online »](#)

Protein Pathways: RNA degradation

### Product images:



WB Suggested Anti-EDC3 Antibody; Titration: 1.0 ug/ml; Positive Control: Jurkat Whole Cell EDC3 is supported by BioGPS gene expression data to be expressed in Jurkat