

Product datasheet for **TA337976**

CXXC4 Rabbit Polyclonal Antibody

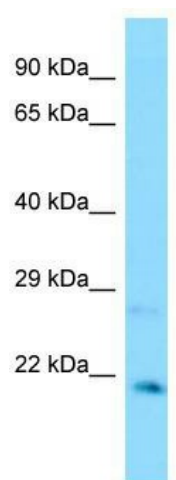
Product data:

Product Type:	Primary Antibodies
Applications:	WB
Recommended Dilution:	WB
Reactivity:	Human
Host:	Rabbit
Isotype:	IgG
Clonality:	Polyclonal
Immunogen:	The immunogen for anti-CXXC4 antibody is: synthetic peptide directed towards the C-terminal region of Human CXXC4. Synthetic peptide located within the following region: GGAGGANPAKKRKRKRCGVCVPCPKRLINCGVCSSCRNRKTGHQICKFRKCE
Formulation:	Liquid. Purified antibody supplied in 1x PBS buffer with 0.09% (w/v) sodium azide and 2% sucrose. <i>Note that this product is shipped as lyophilized powder to China customers.</i>
Purification:	Affinity Purified
Conjugation:	Unconjugated
Storage:	Store at -20°C as received.
Stability:	Stable for 12 months from date of receipt.
Predicted Protein Size:	21 kDa
Gene Name:	CXXC finger protein 4
Database Link:	NP_079488 Entrez Gene 80319 Human
Background:	CXXC4 acts as a negative regulator of the Wnt signaling pathway via its interaction with DVL1.
Synonyms:	IDAX
Note:	Immunogen Sequence Homology: Dog: 100%; Pig: 100%; Rat: 100%; Human: 100%; Mouse: 100%; Bovine: 100%; Rabbit: 100%; Zebrafish: 100%
Protein Families:	Druggable Genome
Protein Pathways:	Wnt signaling pathway



[View online »](#)

Product images:



WB Suggested Anti-CXXC4 Antibody; Titration: 1.0 ug/ml; Positive Control: MCF7 Whole Cell