

## Product datasheet for **TA337974**

### Sostdc1 Rabbit Polyclonal Antibody

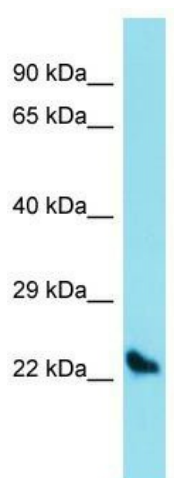
#### Product data:

Product Type:	Primary Antibodies
Applications:	WB
Recommended Dilution:	WB
Reactivity:	Mouse
Host:	Rabbit
Isotype:	IgG
Clonality:	Polyclonal
Immunogen:	The immunogen for anti-Sostdc1 antibody is: synthetic peptide directed towards the C-terminal region of Mouse Sostdc1. Synthetic peptide located within the following region: EWRCVNDKTRTQRIQLQCQDGSTRYKITVVTACKCKRYTRQHNESSHNF
Formulation:	Liquid. Purified antibody supplied in 1x PBS buffer with 0.09% (w/v) sodium azide and 2% sucrose.
Purification:	Affinity Purified
Conjugation:	Unconjugated
Storage:	Store at -20°C as received.
Stability:	Stable for 12 months from date of receipt.
Predicted Protein Size:	21 kDa
Gene Name:	sclerostin domain containing 1
Database Link:	<a href="#">NP_079588</a> <a href="#">Entrez Gene 66042 Mouse</a> <a href="#">Q9CQN4</a>
Background:	Sostdc1 may be involved in the onset of endometrial receptivity for implantation/sensitization for the decidual cell reaction. It enhances Wnt signaling and inhibits TGF-beta signaling and directly antagonizes activity of BMP2, BMP4, BMP6 and BMP7 in a dose-dependent manner.
Synonyms:	CDA019; DKFZp564D206; ECTODIN; USAG-1; USAG1
Note:	Immunogen Sequence Homology: Dog: 100%; Pig: 100%; Rat: 100%; Horse: 100%; Human: 100%; Mouse: 100%; Bovine: 100%; Rabbit: 100%; Guinea pig: 100%; Zebrafish: 92%



[View online »](#)

Product images:



Host: Rabbit; Target Name: Sostdc1; Sample  
Tissue: Mouse Liver lysates; Antibody Dilution: 1.0  
ug/ml