

Product datasheet for **TA337971**

Arpc5 Rabbit Polyclonal Antibody

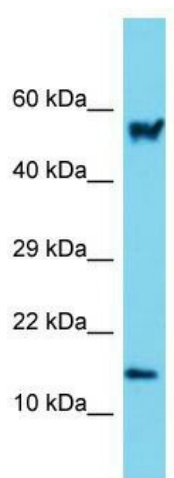
Product data:

Product Type:	Primary Antibodies
Applications:	WB
Recommended Dilution:	WB
Reactivity:	Mouse
Host:	Rabbit
Isotype:	IgG
Clonality:	Polyclonal
Immunogen:	The immunogen for anti-Arpc5 antibody is: synthetic peptide directed towards the N-terminal region of Mouse Arpc5. Synthetic peptide located within the following region: VDEYDENK FVDEEDGGDQGAGPDEGEVDSCLRQGNMTAALQAALKNPPIN
Formulation:	Liquid. Purified antibody supplied in 1x PBS buffer with 0.09% (w/v) sodium azide and 2% sucrose. <i>Note that this product is shipped as lyophilized powder to China customers.</i>
Purification:	Affinity Purified
Conjugation:	Unconjugated
Storage:	Store at -20°C as received.
Stability:	Stable for 12 months from date of receipt.
Predicted Protein Size:	16 kDa
Gene Name:	actin related protein 2/3 complex, subunit 5
Database Link:	NP_080645 Entrez Gene 67771 Mouse Q9CPW4
Background:	Arpc5 functions as component of the Arp2/3 complex which is involved in regulation of actin polymerization and together with an activating nucleation-promoting factor (NPF) mediates the formation of branched actin networks.
Synonyms:	ARC16; dj127c7.3; MGC88523; p16-Arc
Note:	Immunogen Sequence Homology: Pig: 100%; Rat: 100%; Goat: 100%; Horse: 100%; Human: 100%; Mouse: 100%; Bovine: 100%; Guinea pig: 100%



[View online »](#)

Product images:



Host: Rabbit; Target Name: Arpc5; Sample Tissue: Mouse Small Intestine lysates; Antibody Dilution: 1.0 ug/ml