

Product datasheet for **TA337970**

Asprv1 Rabbit Polyclonal Antibody

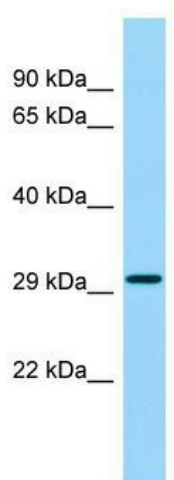
Product data:

Product Type:	Primary Antibodies
Applications:	WB
Recommended Dilution:	WB
Reactivity:	Mouse
Host:	Rabbit
Isotype:	IgG
Clonality:	Polyclonal
Immunogen:	The immunogen for anti-Asprv1 antibody is: synthetic peptide directed towards the middle region of Mouse Asprv1. Synthetic peptide located within the following region: DVLQDHNAVLDFEHRCTLKGKKFRLLPVGSSLEDFDLELIEEEEESSA
Formulation:	Liquid. Purified antibody supplied in 1x PBS buffer with 0.09% (w/v) sodium azide and 2% sucrose. <i>Note that this product is shipped as lyophilized powder to China customers.</i>
Purification:	Affinity Purified
Conjugation:	Unconjugated
Storage:	Store at -20°C as received.
Stability:	Stable for 12 months from date of receipt.
Predicted Protein Size:	33 kDa
Gene Name:	aspartic peptidase, retroviral-like 1
Database Link:	NP_080690 Entrez Gene 67855 Mouse Q09PK2
Background:	The function of this protein remains unknown.
Synonyms:	FLJ25084; MUNO; SASP; SASPase; Taps
Note:	Immunogen Sequence Homology: Human: 100%; Dog: 93%; Pig: 93%; Rat: 93%; Mouse: 93%; Bovine: 93%; Rabbit: 93%; Guinea pig: 93%; Horse: 86%



[View online »](#)

Product images:



WB Suggested Anti-Asprv1 Antibody; Titration: 1.0 ug/ml; Positive Control: Mouse Testis