

## Product datasheet for **TA337969**

### **Tmem86a Rabbit Polyclonal Antibody**

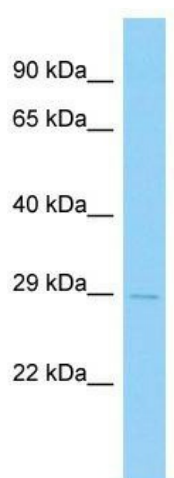
#### **Product data:**

<b>Product Type:</b>	Primary Antibodies
<b>Applications:</b>	WB
<b>Recommended Dilution:</b>	WB
<b>Reactivity:</b>	Mouse
<b>Host:</b>	Rabbit
<b>Isotype:</b>	IgG
<b>Clonality:</b>	Polyclonal
<b>Immunogen:</b>	The immunogen for anti-Tmem86a antibody is: synthetic peptide directed towards the N-terminal region of Mouse Tmem86a. Synthetic peptide located within the following region: MVSPVTVKSEGPKLVPPFKATCVYFVLWLPSSSPSWVSALIKCLPIFCL
<b>Formulation:</b>	Liquid. Purified antibody supplied in 1x PBS buffer with 0.09% (w/v) sodium azide and 2% sucrose.
<b>Purification:</b>	Affinity Purified
<b>Conjugation:</b>	Unconjugated
<b>Storage:</b>	Store at -20°C as received.
<b>Stability:</b>	Stable for 12 months from date of receipt.
<b>Predicted Protein Size:</b>	27 kDa
<b>Gene Name:</b>	transmembrane protein 86A
<b>Database Link:</b>	<a href="#">NP_080712</a> <a href="#">Entrez Gene 67893 Mouse</a> <a href="#">Q9D8N3</a>
<b>Background:</b>	The function of this protein remains unknown.
<b>Synonyms:</b>	FLJ90119
<b>Note:</b>	Immunogen Sequence Homology: Pig: 100%; Rat: 100%; Horse: 100%; Human: 100%; Mouse: 100%; Bovine: 100%; Rabbit: 100%; Zebrafish: 100%; Guinea pig: 100%



[View online »](#)

## Product images:



Host: Rabbit; Target Name: Tmem86a; Sample  
Tissue: Mouse Testis lysates; Antibody Dilution:  
1.0 ug/ml