

Product datasheet for **TA337968**

Dnase111 Rabbit Polyclonal Antibody

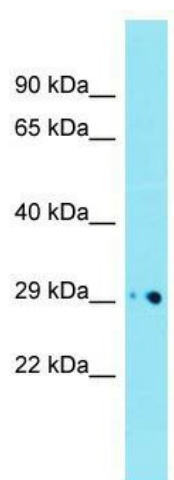
Product data:

Product Type:	Primary Antibodies
Applications:	WB
Recommended Dilution:	WB
Reactivity:	Mouse
Host:	Rabbit
Isotype:	IgG
Clonality:	Polyclonal
Immunogen:	The immunogen for anti-Dnase111 antibody is: synthetic peptide directed towards the middle region of Mouse Dnase111. Synthetic peptide located within the following region: ADCASLTKKRLKSLLLRTKAGFWWIPDGEDTTVRASTNCTYDRIVVHGQ
Formulation:	Liquid. Purified antibody supplied in 1x PBS buffer with 0.09% (w/v) sodium azide and 2% sucrose. <i>Note that this product is shipped as lyophilized powder to China customers.</i>
Purification:	Affinity Purified
Conjugation:	Unconjugated
Storage:	Store at -20°C as received.
Stability:	Stable for 12 months from date of receipt.
Predicted Protein Size:	32 kDa
Gene Name:	deoxyribonuclease 1-like 1
Database Link:	NP_081385 Entrez Gene 69537 Mouse Q9D7J6
Background:	The function of this protein remains unknown.
Synonyms:	DNAS1L1; DNASEX; DNL1L; OTTHUMP00000031940; OTTHUMP00000032113; XIB
Note:	Immunogen Sequence Homology: Dog: 100%; Pig: 100%; Rat: 100%; Horse: 100%; Human: 100%; Guinea pig: 100%; Bovine: 93%; Rabbit: 93%; Mouse: 92%



[View online »](#)

Product images:



Host: Rabbit; Target Name: Dnase1l1; Sample
Tissue: Mouse Heart lysates; Antibody Dilution:
1.0 ug/ml