

## Product datasheet for **TA337967**

### Iqgap2 Rabbit Polyclonal Antibody

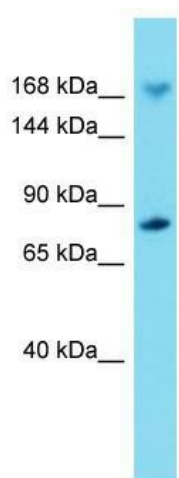
#### Product data:

Product Type:	Primary Antibodies
Applications:	WB
Recommended Dilution:	WB
Reactivity:	Mouse
Host:	Rabbit
Isotype:	IgG
Clonality:	Polyclonal
Immunogen:	The immunogen for anti-Iqgap2 antibody is: synthetic peptide directed towards the C-terminal region of Mouse Iqgap2. Synthetic peptide located within the following region: DNLKRKNSRRSIKLDGKAEPKGTKRVKPVRYYTAAKLHDKGVLLGIDDLQT
Formulation:	Liquid. Purified antibody supplied in 1x PBS buffer with 0.09% (w/v) sodium azide and 2% sucrose. <i>Note that this product is shipped as lyophilized powder to China customers.</i>
Purification:	Affinity Purified
Conjugation:	Unconjugated
Storage:	Store at -20°C as received.
Stability:	Stable for 12 months from date of receipt.
Predicted Protein Size:	180 kDa
Gene Name:	IQ motif containing GTPase activating protein 2
Database Link:	<a href="#">NP_081987</a> <a href="#">Entrez Gene 544963 Mouse</a> <a href="#">Q3UQ44</a>
Background:	The function of this protein remains unknown.
Synonyms:	IQGAP2
Note:	Immunogen Sequence Homology: Dog: 100%; Horse: 100%; Human: 100%; Pig: 93%; Rat: 93%; Rabbit: 93%; Guinea pig: 92%; Bovine: 86%; Mouse: 85%



[View online »](#)

Product images:



Host: Rabbit; Target Name: Iqgap2; Sample  
Tissue: Mouse Brain lysates; Antibody Dilution:  
1.0 ug/ml