

Product datasheet for **TA337966**

Mocs1 Rabbit Polyclonal Antibody

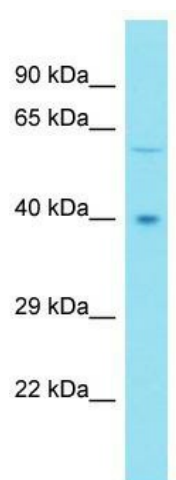
Product data:

Product Type:	Primary Antibodies
Applications:	WB
Recommended Dilution:	WB
Reactivity:	Mouse
Host:	Rabbit
Isotype:	IgG
Clonality:	Polyclonal
Immunogen:	The immunogen for anti-Mocs1 antibody is: synthetic peptide directed towards the middle region of Mouse Mocs1. Synthetic peptide located within the following region: FDGNKWNFKKMVSYPEMLDIRQWPGLEKLPEEDSSTAKAFKIPGFQGG
Formulation:	Liquid. Purified antibody supplied in 1x PBS buffer with 0.09% (w/v) sodium azide and 2% sucrose. <i>Note that this product is shipped as lyophilized powder to China customers.</i>
Purification:	Affinity Purified
Conjugation:	Unconjugated
Storage:	Store at -20°C as received.
Stability:	Stable for 12 months from date of receipt.
Predicted Protein Size:	43 kDa
Gene Name:	molybdenum cofactor synthesis 1
Database Link:	NP_082740 Entrez Gene 56738 Mouse Q5RKZ7
Background:	Isoform Mocs1a and isoform Mocs1b probably form a complex that catalyzes the conversion of 5'-GTP to cyclic pyranopterin monophosphate (cPMP or molybdopterin precursor Z).
Synonyms:	KIAA0381; MIG11; MOCOD; MOCS1A; MOCS1B
Note:	Immunogen Sequence Homology: Human: 100%; Dog: 93%; Pig: 93%; Horse: 93%; Bovine: 93%; Rabbit: 93%; Rat: 86%; Mouse: 86%; Guinea pig: 79%



[View online »](#)

Product images:



Host: Rabbit; Target Name: Mocs1; Sample
Tissue: Mouse Heart lysates; Antibody Dilution:
1.0 ug/ml