

Product datasheet for **TA337964**

PRR7 Rabbit Polyclonal Antibody

Product data:

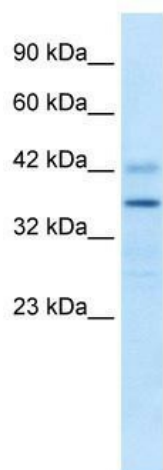
| | |
|-------------------------|---|
| Product Type: | Primary Antibodies |
| Applications: | IHC, WB |
| Recommended Dilution: | WB, IHC |
| Reactivity: | Human |
| Host: | Rabbit |
| Isotype: | IgG |
| Clonality: | Polyclonal |
| Immunogen: | The immunogen for anti-PRR7 antibody: synthetic peptide directed towards the middle region of human PRR7. Synthetic peptide located within the following region: AEP PPPYSEVLTDRGLYRKIVTPFLSR RDSA EKQE QPPPSYKPLFLDRG |
| Formulation: | Liquid. Purified antibody supplied in 1x PBS buffer with 0.09% (w/v) sodium azide and 2% sucrose. <i>Note that this product is shipped as lyophilized powder to China customers.</i> |
| Purification: | Affinity Purified |
| Conjugation: | Unconjugated |
| Storage: | Store at -20°C as received. |
| Stability: | Stable for 12 months from date of receipt. |
| Predicted Protein Size: | 31 kDa |
| Gene Name: | proline rich 7 (synaptic) |
| Database Link: | NP_085044 Entrez Gene 80758 Human Q8TB68 |
| Background: | PRR7 encodes a proline-rich membrane protein which is involved in modulating neural activities via interactions with the NMDA receptor and PSD-95, and PSD core formation. |
| Synonyms: | MGC10772 |
| Note: | Immunogen Sequence Homology: Dog: 100%; Pig: 100%; Rat: 100%; Horse: 100%; Human: 100%; Mouse: 100%; Bovine: 100%; Rabbit: 100%; Guinea pig: 100% |



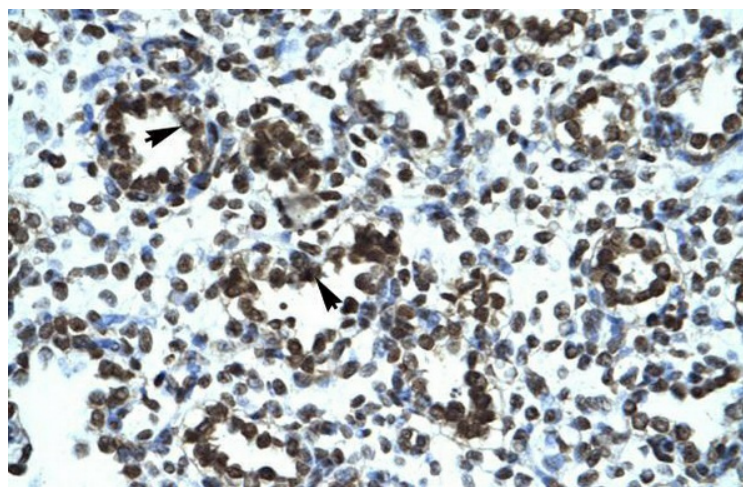
[View online »](#)

Protein Families: Transmembrane

Product images:



WB Suggested Anti-PRR7 Antibody Titration: 0.2-1 ug/ml; ELISA Titer: 1:12500; Positive Control: Jurkat cell lysate



Human Lung