

Product datasheet for **TA337960**

CFHR5 Rabbit Polyclonal Antibody

Product data:

Product Type:	Primary Antibodies
Applications:	WB
Recommended Dilution:	WB
Reactivity:	Human
Host:	Rabbit
Isotype:	IgG
Clonality:	Polyclonal
Immunogen:	The immunogen for anti-CFHR5 antibody is: synthetic peptide directed towards the N-terminal region of Human CFHR5. Synthetic peptide located within the following region: SCVERGWSTPPICSFTKGECHVPILEANVDAQPKESYKVGDLKFSCKR
Formulation:	Liquid. Purified antibody supplied in 1x PBS buffer with 0.09% (w/v) sodium azide and 2% sucrose. <i>Note that this product is shipped as lyophilized powder to China customers.</i>
Purification:	Affinity Purified
Conjugation:	Unconjugated
Storage:	Store at -20°C as received.
Stability:	Stable for 12 months from date of receipt.
Predicted Protein Size:	64 kDa
Gene Name:	complement factor H related 5
Database Link:	NP_110414 Entrez Gene 81494 Human Q9BXR6



[View online »](#)

Background:

This gene is a member of a small complement factor H (CFH) gene cluster on chromosome 1. Each member of this gene family contains multiple short consensus repeats (SCRs) typical of regulators of complement activation. The protein encoded by this gene has nine SCRs with the first two repeats having heparin binding properties, a region within repeats 5-7 having heparin binding and C reactive protein binding properties, and the C-terminal repeats being similar to a complement component 3 b (C3b) binding domain. This protein co-localizes with C3, binds C3b in a dose-dependent manner, and is recruited to tissues damaged by C-reactive protein.

Synonyms:

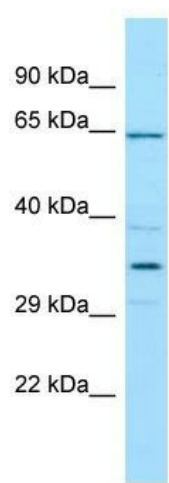
CFHL5; CFHR5D; FHR-5; FHR5

Note:

Immunogen Sequence Homology: Human: 100%

Protein Families:

Secreted Protein, Transmembrane

Product images:

WB Suggested Anti-CFHR5 Antibody; Titration: 1.0 ug/ml; Positive Control: THP-1 Whole Cell