

Product datasheet for **TA337955**

PHAX Rabbit Polyclonal Antibody

Product data:

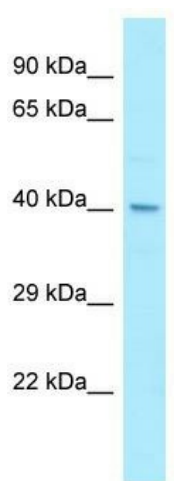
Product Type:	Primary Antibodies
Applications:	WB
Recommended Dilution:	WB
Reactivity:	Human
Host:	Rabbit
Isotype:	IgG
Clonality:	Polyclonal
Immunogen:	The immunogen for anti-PHAX antibody is: synthetic peptide directed towards the C-terminal region of Human PHAX. Synthetic peptide located within the following region: DIFYIENQKEYENKKAARKRRTQVLGKKMKQAIKSLNFQEDDDTSRETFA
Formulation:	Liquid. Purified antibody supplied in 1x PBS buffer with 0.09% (w/v) sodium azide and 2% sucrose. <i>Note that this product is shipped as lyophilized powder to China customers.</i>
Purification:	Affinity Purified
Conjugation:	Unconjugated
Storage:	Store at -20°C as received.
Stability:	Stable for 12 months from date of receipt.
Predicted Protein Size:	44 kDa
Gene Name:	phosphorylated adaptor for RNA export
Database Link:	NP_115553 Entrez Gene 51808 Human Q9H814
Background:	PHAX is a phosphoprotein adapter involved in the XPO1-mediated U snRNA export from the nucleus. PHAX is also a bridge components required for U snRNA export, the cap binding complex (CBC)-bound snRNA on the one hand and the GTPase Ran in its active GTP-bound form together with the export receptor XPO1 on the other.
Synonyms:	RNUXA



[View online »](#)

Note: Immunogen Sequence Homology: Dog: 100%; Pig: 100%; Rat: 100%; Horse: 100%; Human: 100%; Mouse: 100%; Bovine: 100%; Rabbit: 100%; Guinea pig: 100%

Product images:



WB Suggested Anti-PHAX Antibody; Titration: 1.0 ug/ml; Positive Control: HepG2 Whole Cell