

Product datasheet for **TA337949**

LZTR2 (SEC16B) Rabbit Polyclonal Antibody

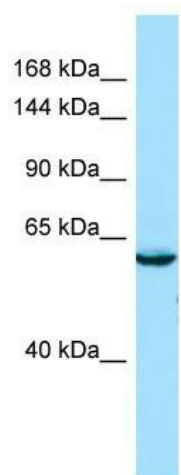
Product data:

Product Type:	Primary Antibodies
Applications:	WB
Recommended Dilution:	WB
Reactivity:	Human
Host:	Rabbit
Isotype:	IgG
Clonality:	Polyclonal
Immunogen:	The immunogen for anti-SEC16B antibody is: synthetic peptide directed towards the C-terminal region of Human SEC16B. Synthetic peptide located within the following region: KSSGFGWFSWFRSKPTKNASPAGDEDEDSSDSPDSEETPRASSPHQAGLGLS
Formulation:	Liquid. Purified antibody supplied in 1x PBS buffer with 0.09% (w/v) sodium azide and 2% sucrose.
Purification:	Affinity Purified
Conjugation:	Unconjugated
Storage:	Store at -20°C as received.
Stability:	Stable for 12 months from date of receipt.
Predicted Protein Size:	59 kDa
Gene Name:	SEC16 homolog B, endoplasmic reticulum export factor
Database Link:	NP_149118 Entrez Gene 89866 Human Q96JE7
Background:	SEC16B is a mammalian homolog of <i>S. cerevisiae</i> Sec16 that is required for organization of transitional endoplasmic reticulum (ER) sites and protein export.
Synonyms:	LZTR2; PGPR-p117; RGPR; SEC16S
Note:	Immunogen Sequence Homology: Human: 100%; Bovine: 79%



[View online »](#)

Product images:



Host: Rabbit; Target Name: SEC16B; Sample
Tissue: HeLa Whole Cell lysates; Antibody Dilution:
1.0 ug/ml