

Product datasheet for **TA337947**

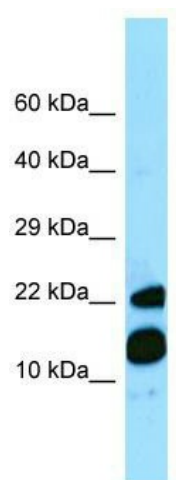
MRFAP1 Rabbit Polyclonal Antibody

Product data:

Product Type:	Primary Antibodies
Applications:	WB
Recommended Dilution:	WB
Reactivity:	Human
Host:	Rabbit
Isotype:	IgG
Clonality:	Polyclonal
Immunogen:	The immunogen for anti-MRFAP1 antibody is: synthetic peptide directed towards the C-terminal region of Human MRFAP1. Synthetic peptide located within the following region: KTQVEASEESALNHLQNPGDAAEGRAAKRCEKAEEKAKEIAKMAEMLVEL
Formulation:	Liquid. Purified antibody supplied in 1x PBS buffer with 0.09% (w/v) sodium azide and 2% sucrose. <i>Note that this product is shipped as lyophilized powder to China customers.</i>
Purification:	Affinity Purified
Conjugation:	Unconjugated
Storage:	Store at -20°C as received.
Stability:	Stable for 12 months from date of receipt.
Predicted Protein Size:	15 kDa
Gene Name:	Morf4 family associated protein 1
Database Link:	NP_150638 Entrez Gene 93621 Human Q9Y605
Background:	The function of this protein remains unknown.
Synonyms:	PAM14; PGR1
Note:	Immunogen Sequence Homology: Pig: 100%; Human: 100%; Bovine: 100%; Dog: 86%



[View online »](#)

Product images:

WB Suggested Anti-MRFAP1 Antibody; Titration:
1.0 ug/ml; Positive Control: Fetal Heart