

Product datasheet for **TA337946**

KRT71 Rabbit Polyclonal Antibody

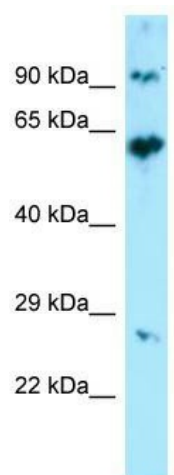
Product data:

Product Type:	Primary Antibodies
Applications:	WB
Recommended Dilution:	WB
Reactivity:	Human
Host:	Rabbit
Isotype:	IgG
Clonality:	Polyclonal
Immunogen:	The immunogen for anti-KRT71 antibody is: synthetic peptide directed towards the middle region of Human KRT71. Synthetic peptide located within the following region: LETLSGDRVRLDSELNRNVRDVVEDYKKRYEEEEINKRTAAENEFVLLKKDV
Formulation:	Liquid. Purified antibody supplied in 1x PBS buffer with 0.09% (w/v) sodium azide and 2% sucrose.
Purification:	Affinity Purified
Conjugation:	Unconjugated
Storage:	Store at -20°C as received.
Stability:	Stable for 12 months from date of receipt.
Predicted Protein Size:	57 kDa
Gene Name:	keratin 71
Database Link:	NP_258259 Entrez Gene 112802 Human Q3SY84
Background:	Keratins are intermediate filament proteins responsible for the structural integrity of epithelial cells and are subdivided into epithelial keratins and hair keratins. This gene encodes a protein that is expressed in the inner root sheath of hair follicles. The type II keratins are clustered in a region of chromosome 12q13.
Synonyms:	HYPT13; K6IRS1; KRT6IRS; KRT6IRS1
Note:	Immunogen Sequence Homology: Human: 100%; Bovine: 100%; Rabbit: 100%; Dog: 93%; Pig: 93%; Rat: 93%; Horse: 93%; Mouse: 93%; Sheep: 93%



[View online »](#)

Product images:



WB Suggested Anti-KRT71 Antibody; Titration: 1.0 ug/ml; Positive Control: 293T Whole Cell